

As my ancestors planted for me before I was born...so do I plant for those who come after me.
- B. Talmud Ta-anit 23a



ANNUAL REPORT 2017



Jewish Foundation
OF GREATER NEW HAVEN

CREATE A
JEWISH LEGACY
GREATER NEW HAVEN

/ CONTENTS /

- 1..... Message from the Board Chair
- 2..... Message from the Executive Director
- 3..... Your Center for Philanthropy
- 4..... Giving Tips and Opportunities
- 5..... Financial Snapshot
- 6..... \$52 Million+ in Funds
- 7..... The Earl and Muriel Banquer Israel Endowment Fund
- 8..... The Tillie L. and Albert B. Friedman Fund For Jewish Education in Honor of Sophia, Aaron and Benjamin Bruce
- 9..... How We Help
- 10..... New Funds
- 11..... The New Haven Jewish Community — Create a Jewish Legacy — Making Its Mark
- 12..... Beatrice Breiner Endowment Fund at The Towers
- 13..... Fran Wallnau Family Endowment Fund at the Towers
- 14..... Towers Residents' Association Fund in Honor of Hyla and Barry Vine
- 16-19 .. Scholarship Opportunities through the Jewish Foundation
- 20..... Donations
- 22..... All Charitable Distributions
- 23..... Breakout in Local Jewish Distributions
- 24-28 .. Charitable Distributions by Organization
- 29..... Fund and Gift Descriptions
- 30-31 .. PACE & LOJE
- 32..... Planned Gifts
- 33..... Philanthropic and Donor-Advised Funds
- 34-43 .. Designated Endowment Funds
- 44-45 . Unrestricted Funds
- 46..... Hespel for Saul Bell
- 47..... The Earl and Muriel Banquer Israel Endowment Fund
- 48-51 .. Women of Vision and Women of Vision Too
- 47..... Women of Vision Society Grant Awards
- 52-53 .. Youth Philanthropy
- 54..... Investment and Management
- 55..... The Endowment
- 56..... Assets
- 57..... Governance

/ CREATE A LEGACY FOR WHAT IS IMPORTANT TO YOU /

- Israel and Overseas Endowment Funds
- Funds for Those in Need
- Funds for Synagogues
- PACE and LOJE Funds for the Jewish Federation
- Youth Philanthropy and Build a Tzedakah Funds
- Funds for Jewish Camping
- Funds for Jewish Education
- Funds for Local Jewish Agencies
- Unrestricted Funds
- Women of Vision Funds
- Donor-Advised and Family Philanthropic Funds

YOU CAN DO IT ALL HERE . . .

at the Jewish Foundation of Greater New Haven



Jewish Foundation
OF GREATER NEW HAVEN





Dr. Steven J. Fleischman
Board Chair



/ MESSAGE FROM THE BOARD CHAIR /

Kol Yisrael Arevim Zeh Bazeh (All of Israel are Responsible for One Another). This past year, as I travelled for the first time to Israel, as well as to the Jewish communities of Ukraine and Poland, I was fortunate to see, first-hand, what this really means.

It was an incredible experience and one that gave me a much better understanding of the value not only of my contributions to the Jewish world, but those of the Jewish Foundation, as well as our community. I witnessed first-hand how dollars raised in our Federation Annual Campaign are distributed in overseas communities. We learned that one million Jews remain in the former Soviet Union. In Kiev, I met with Jewish elderly who live on minimal fixed incomes and are often homebound. Thanks to the American Jewish Joint Distribution Committee (the JDC), they do not have to choose between rent and food and medicine. Most importantly, they have aides who visit them on a daily basis. One woman we spent time with spoke of how the companionship of her Jewish Agency aide has been her only link to the outside world as she is no longer able to walk down the four flights of stairs and there are no elevators in the building. She shared her hopes that the program continues for herself as well as others. We met Jewish refugees from the Crimea, the first displaced persons since World War II—they are also being assisted by the JDC and the Jewish Agency. On the other end of the spectrum, we met Jewish youth who have been part of a revival of Jewish youth groups in Ukraine. Their love for Judaism is incredible and it was amazing to witness how a country that was devoid of organized religion for decades can engage youth and create youth groups and opportunities for kids to develop their Jewish identity. The JDC as well as the Jewish Agency for Israel (with funding from Federation campaigns throughout North America), support these youth programs and the Jewish Agency also assists those who choose to make Aliyah to Israel. In Israel, we also saw programs that are supported by our community's campaign dollars. From programs for at risk Arab youth in elementary schools, to job programs for all young adults in the poorer periphery cities, we witnessed first-hand how our dollars, partnered with Israeli government programs, are being deployed across Israel to combat poverty and discrimination.

As if my first trip to Israel were not enough, this spring I had the opportunity to go back to Israel on the March of the Living. Evan Weiner and I chaperoned the group, which included kids from all over New England, New York, New Jersey and South America. It was incredible to participate in a trip where over 15,000 Jews from around the world came together to march from Auschwitz to Birkenau and then on to Israel where we celebrated the 70th birthday of the State of Israel. It is likely that this generation will be the last to have a chance to hear, first-hand, from survivors. Now more than ever, we need to support this trip so that our children and generations to follow can ensure we will never forget.

I share these two stories to highlight the incredible activities that our Federation and Foundation support both here and abroad. Your giving to our local Federation annual campaign supports Jews in need throughout the globe. Designated donor funds at the Jewish Foundation, established by current and legacy gifts, help support the March of the Living, programs in Israel, as well as our community's campaign, which allow us to help Jews in need, throughout the world. There is no better way of insuring that future generations will have the support they need to maintain a thriving Jewish community than through the creation of legacy funds that will provide support for our community here and overseas, for perpetuity. Please consider starting a fund with us.

Thank you again for your continued generosity. I want to thank all of our generous donors who have supported the Jewish community in this past year. The Foundation continues to do wonderful things and as we grow our funds, we are ensuring the financial support for our Jewish community for years to come.



Lisa A. Stanger, Esq.
Executive Director

A handwritten signature in black ink, appearing to read "Lisa Stanger". The signature is fluid and cursive.

/ MESSAGE FROM THE EXECUTIVE DIRECTOR /

Live as a good ancestor.

As the professional in charge of the Jewish Foundation, I have had the pleasure of meeting and getting to know many in our community.

I have also had the sadness that comes when those people pass. Many of them stay with me; I think of them often, what they did, what they said. One in particular I remember with love and with sadness too is George Posener.

George passed away at age 100 (or was it 99; it was never clear to us). George outlived his wife Leah by decades, as he did his siblings. George had two sons who died as little babies. He had no nieces or nephews. When I would visit George, he would open albums to show me—there were no cute grandbabies in his albums. What he would show me was his endowment statements. George established many endowments with the Jewish Foundation. Endowments for his synagogue, Congregation Beth El-Keser Israel (especially for youth programs), endowments for our area day schools, Ezra Academy and Southern Connecticut Hebrew Academy, endowments for our local hospitals, and for the tikvah program at Camp Ramah. For these endowments, he had statements going back for years, in albums, and that is what he would show me. No little babies to hug, but his endowments were his legacy. No matter how many endowments he had it was never enough; he always wanted to establish a new one. And he always made sure to tell me how it should be invested and managed, it needed to last forever, it needed to be his legacy. He was well aware that this was how he could and would be remembered.

George has no grandbabies, no grandnieces, or nephews. However, George lived as a good ancestor, a great ancestor—we all benefit from that. His endowments grow; they make annual distributions, in his name, to those organizations that were important to him—and this will continue in perpetuity. What could be more important? Those who came before George planted the seeds for him, and he in turn did the same for future generations.

Together, with people like George, we affect lives and make a difference in our community,

/ YOUR CENTER FOR PHILANTHROPY /

THE JEWISH FOUNDATION IS THRILLED TO ANNOUNCE THAT WE NOW HAVE A NEW FUNDS DATABASE!

The Jewish Foundation's new database will serve as a resource for our donors and will include a wish list of local funding opportunities to match our donors to needs in the community.

In addition, donors will be able to donate directly to their funds, and fund advisors for donor advised funds will be able to recommend grants either to items on the community wish list or to any qualified tax-exempt organization.

All donors and organizations will be able to access their fund information and history through the database. Donors and organizations will be able to view monthly fund balances and see fund history including investment returns, donations, and distributions. For those who still prefer paper statements, the Foundation will continue to mail statements.

For more information and to sign up for access, contact the Foundation Grants and Gifts Manager, Tiberius Halai, Thalai@jewishnewhaven.org or 203-387-2424, ext. 312



"How wonderful it is that nobody needs to wait a single moment before starting to improve the world."

— Anne Frank

/ GIVING TIPS AND OPPORTUNITIES /

IRA CHARITABLE ROLLOVER

The IRA Charitable Rollover creates an opportunity for donors to establish an endowment or make an outright charitable gift to a charitable organization. Your rollover can be directed for a capital campaign gift, current needs or restricted for endowment purposes. Your gift can be earmarked for your synagogue, a local Jewish agency, Jewish education, or any program or organization that is important to you. In addition, if you have a secondary smaller IRA, which is not a necessary income source, this is an opportunity to donate that IRA to our community and make a significant and much needed impact.

TEN THINGS TO KNOW ABOUT THE IRA CHARITABLE ROLLOVER:

1. The distribution from your IRA must be made directly to the charitable organization.
2. You must be 70 ½ or older at the time that the distribution is made.
3. The IRA Charitable Rollover is permanent; you can do it this year and every year.
4. The maximum amount that can qualify is \$100,000.
5. The IRA Charitable Rollover will satisfy your required minimum distribution.
6. You can rollover more than your required minimum distribution and in addition to your required minimum distribution (up to \$100,000 to charity).
7. The amount of the IRA Charitable Rollover does not need to be reported as income on your federal or Connecticut income tax return.
8. Only distributions from traditional and Roth IRAs qualify.
9. To qualify, the distribution can only be for charitable purposes and cannot be designated for a donor advised fund, supporting organization, private foundation or life-income gift (charitable trust or annuity). No goods or services can be received in exchange for the distribution (i.e. tickets or dinner).
10. In most cases, you will need to contact your IRA plan administrator/financial institution.

DONATING LONG-TERM APPRECIATED SECURITIES CAN PROVIDE ADDITIONAL TAX BENEFITS

- When you donate long-term appreciated securities, you can claim a charitable income tax deduction for the fair market value of the securities on the date of transfer, no matter what you originally paid for them.
- You pay no capital gains tax on the transfer.

For example, if the securities originally cost \$2,000 and now have a fair market value of \$10,000, you do not pay tax on the \$8,000 gain and you may claim a charitable income tax deduction for \$10,000.

HOW DO GIFTS OF CASH AND SECURITIES COMPARE?

	Gift Of \$10,000 Cash	Gift Of \$10,000 Stock
Initial Cost Basis of Securities/Appreciation	Not Applicable	\$2,000/\$8,000
Capital Gains Tax Saved or Paid, Assuming 20% Rate	Not Applicable	\$1,600
Ordinary Income Tax Savings (35% Tax Bracket x Value Of Gift)	\$3,500	\$3,500
Net Tax Savings	\$3,500	\$5,100

Please note: A different tax rate may apply to you and, accordingly, the charitable benefit you receive may vary.

Gifts of securities may be deductible up to 30% of your adjusted gross income, however, excess deductible amounts may be carried forward for five years.

Please consult with your professional advisor to determine your specific situation.

FISCAL YEAR
ENDING DECEMBER
31, 2017

For additional
information concerning
financials and
investments, please
see pages 54-56.

/ FINANCIAL SNAPSHOT /

Current Assets

\$52,553,080

24 new funds established
680 total funds and trusts

Investment Return

14.81%*

One-year
(as of 12/31/17)

Contributions

\$2,451,526

In gifts received

Grants and Charitable Distributions

\$2,817,517

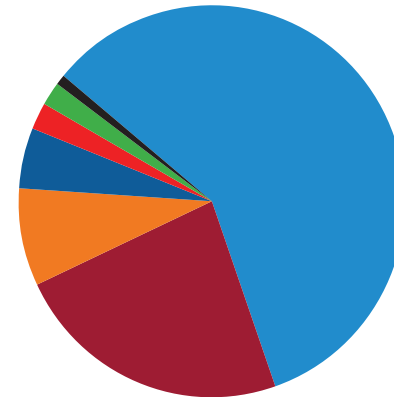
In grants and
distributions to charitable
organizations – 72.8%
of grants were to local
Jewish organizations &
synagogues.

Operating Expenses

\$695,792

For the 2017 fiscal year,
operating expenses of
\$695,792 were 1.3% of
total assets

Asset Allocation

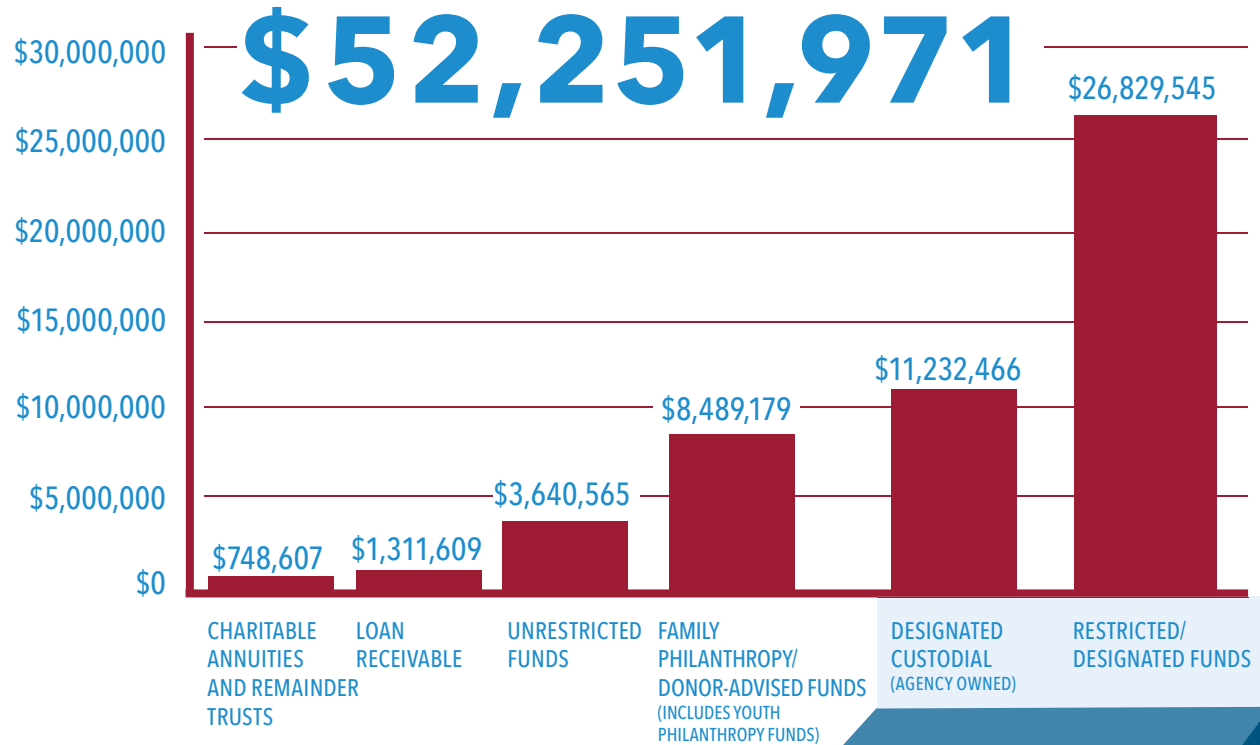


Public Equity	58%
Fixed Income	23%
Hedge Funds	8%
Private Equity	5%
Cash & Equivalents	2%
Private Real Assets	2%
Private Credit	1%
Other Assets	1%

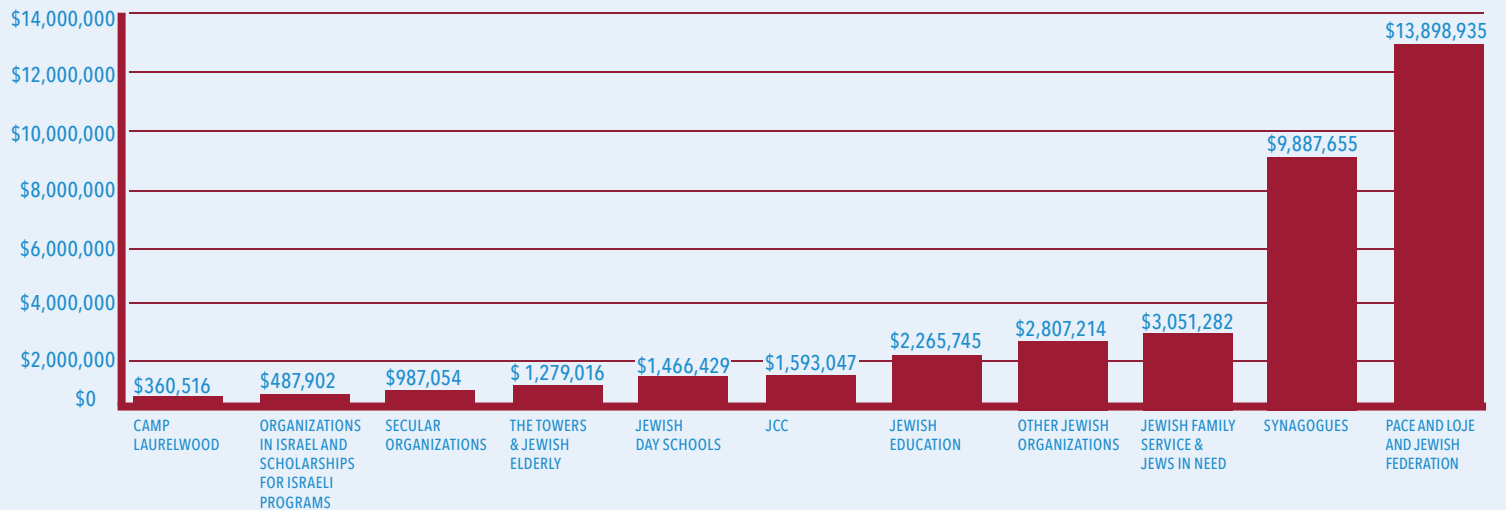
TOTAL 100%

*Beginning in 2017, the Jewish Foundation changed investment advisors. Because of this, we do not have long-term returns.

/ 52+ MILLION IN FUNDS /



BREAKDOWN OF DESIGNATED FUNDS
DESIGNATED CUSTODIAL & DESIGNATED RESTRICTED



/ THE NANCI AND CRAIG SKLAR FAMILY FUND /

In 1983, when Dr. Craig Sklar first moved to New Haven to begin an ophthalmology residency at Yale, he couldn't have foreseen that 30 years into the future, the following things would occur: he would remain in the area and settle in Woodbridge with his wife Nanci, raise a family, build a successful ophthalmic medicine practice (The Eye Care Group), and, in 2018, be poised to become the next in line for chairmanship of the local Jewish Foundation.

It comes as no surprise to learn that the Sklars' connections to community, giving back, and Jewish values have deep roots. "Philanthropy has always been important to us," he shares. "My father was the only member of his family to survive the Holocaust (he left before the war as his mother recognized the growing anti-Semitism in Europe). He always stressed the importance of giving as long as one had something to give."

Longstanding members of B'nai Jacob in Woodbridge, the Sklars were initially introduced to the Greater New Haven Jewish community through participation in the Jewish Federation's Young Leadership program. Nanci has served as vice president and on the Board of Jewish Family Services and is an active member of B'nai Jacob's newly formed Sweet Singers choir. Craig has served on both the board and investment committee of the Jewish Foundation and is currently the Foundation's vice chair. He looks forward to collaborating with his fellow board and staff members, who "provide a seamless conduit to both establishing a fund and completing the donations to qualified charities."

Sklar feels "very fortunate to be in a position to give back to the community" and encourages other like-minded families to do the same. By doing this, he also hopes "to create a continued legacy to encourage charitable contributions by our children who can continue our family traditions."

"...to create a continued legacy to encourage charitable contributions by our children who can continue our family traditions."

— Dr. Craig Sklar

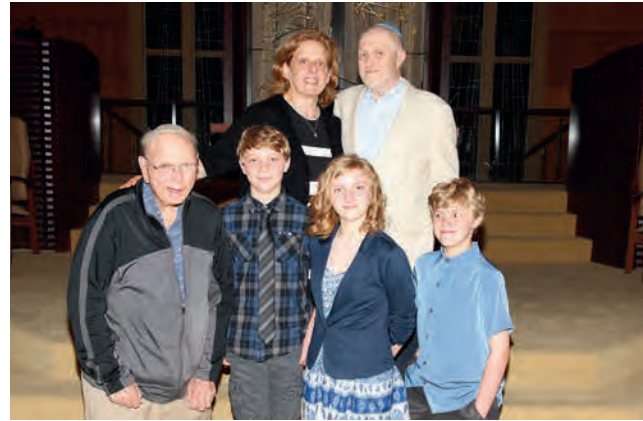


/ THE TILLIE L. AND ALBERT B. FRIEDMAN FUND FOR JEWISH EDUCATION IN HONOR OF SOPHIA, AARON AND BENJAMIN BRUCE /

Harriet Friedman's primary motivation behind setting up this fund was to honor her parents "in a most meaningful way." Tillie and Albert are my parents; Sophia, Aaron, and Ben are their grandchildren (my children)," she explains. "My mother died in 2011, my father in 2015, but the kids are filled with memories of being with them...especially on Jewish holidays."

Synagogue, Judaism, and Jewish learning were all central themes in Harriet Friedman's Philadelphia childhood home. As first generation Americans, her parents "opted to direct their limited resources to get the best Jewish education available for their kids." Both Harriet and her brother Sidney attended a K-8 comprehensive, after-school Hebrew/religious academy and continued their Jewish studies through high school courses at Gratz College.

When she finally settled into New Haven, Harriet was able to find a similarly "rich foundation of Jewish learning and a template for Hebrew studies," for her children at Ezra Academy. "My parents were incredibly pleased," she recalls. "For as long as they were able, they participated in Ezra events...attended the Kindergarten and first grade prayer book functions,



and their joy was palpable." She would send her father images and recordings of, "my kids reading Torah or leading the service at Ezra and he would rejoice."

Friedman feels lucky to be able to honor her parents by "creating a donor advised fund and to direct it towards furthering Jewish education in their 'adopted' home, New Haven. "I think Jewish education is key for maintaining and growing our Jewish community," she adds." My parents believed this, as does my family."

"I think Jewish education is key for maintaining and growing our Jewish community."

— Harriet Friedman

/ HOW WE HELP /

FOUNDATION PROGRAMS AND INITIATIVES

Fund Management and Investment of Synagogue and Agency Custodial Accounts

The foundation's professional staff and its centrality to the Jewish Federation ensure continuous, permanent, and secure fund management. In addition, this enhances donor confidence and prestige and also serves to insulate financial management from the vicissitudes of synagogue and agency governance. Many local not-for-profit organizations have entrusted endowments to the Jewish Foundation for administration and management. These include The Jewish Cemetery Association of Greater New Haven, Congregation Mishkan Israel, Congregation Beth El-Keser Israel, Temple Beth David, Clifford Beers Institute, Ezra Academy, the JCC, Jewish Family Service, Congregation Beth Shalom Rodfe Zedek, Congregation Or Shalom, Congregation B'nai Jacob, Temple Beth Tikvah, Temple Emanuel, The Towers Foundation, Hebrew Burial & Free Loan Assoc., and the Jewish Historical Society.

Donor-Designated Funds for Synagogues and Agencies

The Jewish Foundation works with donors, agencies, and synagogues to solicit and cultivate new restricted endowment funds, either through current gifts, bequests, trusts, or annuities. For existing funds, the foundation provides the donor and the beneficiary organization with quarterly personalized fund reports, provides the beneficiary organization with annual distributions, and works with the beneficiary organization to provide the donor with ongoing stewardship. In addition, the foundation serves as a resource concerning policies, regulations, and laws pertaining to charitable giving as well as the investment and management of endowment funds.

Youth Philanthropy and Build a Tzedakah Funds

The Foundation administers and promotes the Build a Tzedakah Fund program, which enables young adults to establish their own foundation endowment fund.

The Israel and Overseas Endowment Funds

The Jewish Foundation holds restricted endowment funds that guarantee that our community will continue to support Israel and Jewish communities in need overseas. These funds make annual distributions for the Jewish Agency for Israel, for the American Jewish Joint Distribution Committee, or to donor-designated charitable organizations that support Israel and Jews in need overseas.

Birthright Israel

The Jewish Foundation helps fund the New Haven community's share for Birthright Israel, which allows many New Haven-area students a life-transforming experience in Israel.

Create a Jewish Legacy

See page 11.

Scholarships & One Happy Camper

See pages 16-19.

ADVISORY FUNDS

Helping Those in Need — The Maimonides and Devorah Funds

The Maimonides and Devorah Funds at the Jewish Foundation continue to provide anonymous financial assistance for emergencies and/or medical needs, as requested by our rabbis, Jewish Family Service, and other referring agencies. Both funds were established to follow the precepts of Rabbi Moshe Ben Maimon (better known as Maimonides), who, in defining levels of *tzedakah* (charity), deemed one of the highest levels to be *matan b'seter* (giving in secret), in which the benefactor has no knowledge of the recipient and the latter has no knowledge of the donor.

Women of Vision

In 1996, The Women of Vision Society at the Jewish Foundation was created to ensure that a permanent, restricted endowment fund would be available to enhance the quality of life for future generations of Jewish women and their families in Greater New Haven, in Israel, and around the world. The society was created by 100 women who each contributed a minimum of \$1,000 to establish the original endowment, from which annual grants have been made since 1998. In 2002, Women of Vision Society Too was launched to allow additional members of the community the opportunity to participate. Each year, a Women of Vision grants committee makes grant awards that are funded from the Women of Vision Society endowment. Since 1998, over \$180,000 has been awarded for programs and projects of concern to Jewish women. See page 49.

Professional Development Grants

Thanks to the Judith A. Kaye Fund for Teachers in Jewish Education and the Community Education Funds, the Jewish Foundation is thrilled to offer professional development grants for Jewish educators. These grants will help ensure that classroom educators in local Jewish schools have the opportunity to attend workshops and conferences in order to develop their teaching skills, and will help local Jewish organizations to provide educational opportunities to instructors and the community.

Applicants must be either 1. classroom educators employed in Jewish education in a local Jewish school or synagogue and/or 2. A local Jewish school or synagogue. Eligible programs must be hosted by a recognized Jewish institution or reputable educational institution. Application deadlines are April 15 and December 3, 2018. www.jewishnewhaven.org/scholarships

Raising and managing endowment funds for the Federation and its programs, synagogues, local agencies, and the entire community is central to the foundation mission. During this past fiscal year, the following new funds were established.

/ NEW FUNDS /

PACE Fund for the Jewish Federation of GNH

Green & Sklarz Foundation PACE Fund

Build a Tzedakah/Youth Philanthropy Funds

Karley Madison Bayer Fund

Daniella Perry Kingsley Tzedakah Fund

Funds for the Towers

Gordon Family Fund for the benefit of the Towers

Koral Family Fund for the benefit of the Towers

Towers 50th Anniversary Endowment Fund

Towers Endowment in Honor of Evelyn Siegal

Towers' Residents Fund in Honor of

Barry and Hyla Vine

Towers Endowment in Honor of Fran Wallnau

Hyla and Barry Vine Family Endowment

for the Towers

Fund for Temple Emanuel

Temple Emanuel Leave a Legacy Fund

Fund for Congregation BEKI

Saul & Hope Bell Memorial Fund for

Congregation Beth El-Keser Israel

Fund for Ezra Academy

Reiter Ellant Fund for Ezra Academy

Fund for Israel

Earl and Muriel Banquer Israel Endowment Fund

Donor Advised Funds

Caron and Norman Alderman Family Fund

Fleischman Family Foundation

Tillie L. and Albert B. Friedman Memorial Fund

Honoring Sophia, Aaron, and Benjamin Bruce

Barbara Greenberg Philanthropic Fund of the Jewish Foundation of GNH

Jeanette and Dan Oren Family Fund

Jean and Erik Rosenthal Philanthropic Fund

Schaefer-Lawall Family Fund

Mark & Heni Schwartz Family Fund for Jewish Family Service, Westville Synagogue, and Jewish Education

Nanci and Craig Sklar Family Fund

**CREATE A LEGACY
FOR WHAT IS
IMPORTANT
TO YOU**

/ THE NEW HAVEN JEWISH COMMUNITY – CREATE A JEWISH LEGACY – MAKING ITS MARK /

Sustaining the vibrancy of any community over time takes careful thought and planning—and Jewish communities within greater New Haven are no different.



To that end, the CREATE A JEWISH LEGACY initiative has blossomed into an important program for local Jewish organizations actively seeking to secure their community's long-term financial health.

Create a Jewish Legacy New Haven began in 2013 and as of December 2017, through this initiative, **over 350 households have made legacy commitments and/or current endowment gifts for local Jewish organizations and synagogues with an estimated total of \$7.3 million. In addition, there have been more than 550 legacy conversations and 50 group presentations.**

The purpose of the Create a Jewish Legacy initiative, funded by the Harold Grinspoon Foundation and the Jewish Foundation of Greater New Haven, is to assist local synagogues and agencies to launch successful endowment and bequest campaigns. The program provides funding, professional resources, training, and mentoring to the participating organizations. In addition, over the four-year program, the participating agencies will receive incentive grants totaling over \$300,050. By building the current and future endowments for our community organizations, this program will help sustain vital programs, services, and institutions that advance Jewish life in New Haven.

Arlene Schiff, national director of Life & Legacy at the Harold Grinspoon Foundation, commented, "Maintaining the vibrancy and strength of Jewish communities across the country continues to be a concern for those of us involved, whether

professionally or as lay leaders. We are addressing this issue and transforming Jewish communities, by ensuring that the variety of Jewish organizations that make up the fabric of our communities are financially stable and able to meet current and emerging needs, by securing current and after-lifetime commitments that will grow endowments. Additionally, the program provides an opportunity for our Jewish organizations to work cooperatively on behalf of the entire Jewish community and for their most loyal and committed donors to support these valued institutions at a level many never thought possible."

"Over the next 30 years, an estimated \$30 trillion will be passed down from Baby Boomers and their parents to younger generations. There is tremendous potential impact for these funds on Jewish Federations, synagogues, the Jewish community, and the myriad programs and services that are supported," stated Lisa Stanger, executive director of the Jewish Foundation of Greater New Haven. "My job, the Foundation's job, is to assist community members in how they can provide for what is important to them in the community. We also serve as a resource for local professional advisors, as our agencies and synagogues."

The simplest method of creating your legacy is with a current gift of cash or stock. If you cannot do that now, you can create your legacy through a will or estate plan, or by adding (or changing) a beneficiary designation with other assets, such as retirement funds and life insurance. You can create a Jewish legacy with a percentage of your estate or a dollar amount that's comfortable for you. You can commit a cash gift now that goes directly into the endowment. Some gifts can be structured to increase your current income, and the residual will benefit your designated organizations.

Creating your Jewish legacy is simple.

Some options include:

- Bequest in a will
- Gift of life insurance
- Gift of IRA or retirement asset
- Gift of appreciated stock
- Charitable gift annuity or trust
- Any combination of the above

Together we can impact the future of the Jewish community and make a difference in the lives of the generations to come. Go to www.jewishlegacynewhaven.org for more information.

For more information, contact the Jewish Foundation:

Lisa Stanger, Executive Director
203-387-2424, ext. 382
lstanger@jewishnewhaven.org



Orchard Street Shul



To celebrate its 50th anniversary, the Towers has embarked on an endowment campaign. To date they have 14 new endowment funds. Three of these Designated/Restricted Funds are featured here:

/ BEATRICE BREINER ENDOWMENT FUND AT THE TOWERS /



"In our community, it is very common to create a tribute to a parent after they are deceased," says Linda Cedarbaum. "I asked myself why my mother shouldn't feel the appreciation of a tribute in her lifetime? My brother Myles and sister-in-law Fon in Hawaii joined me and my husband in establishing the Beatrice Breiner Fund at the Towers this year. "It was especially important that the fund be at the Towers, because that is the center of my mother's connection to CT."

Shortly after Jesse and Linda moved here, they recognized that newly widowed Bea, who was a lifetime Midwesterner, might be more comfortable

relocating nearer to their Woodbridge home instead of in "beautiful," yet "isolating" Hawaii with her son and daughter-in-law. No sooner did Bea move "directly into the Towers, she found a home and a community ready-made, arms open," Linda recalls. "The Towers is the heart of the Jewish community of New Haven, even if you have no family members there, because it puts into practice so many core Jewish values: Honor your mother and your father, *dor l'dor*, *tikun olam*, welcome the stranger, and heal the needy. The Towers is the Jewish conscience of our community in action."

The Cedarbaum family was pleased by the collaborative process set in place by the Foundation, Vivian Kantrow and the Towers 50th celebration committee that allowed them, "the option of creating named endowment funds that could be funded by multiple family members over the course of several years; a specially designated fund that truly reflects my mother's life and spirit." While Linda feels certain that her mother "has designed the perfect tribute to her lifetime of doing for others," Bea Breiner is thrilled to know that this fund is earmarked to cover special activity fees for her fellow Towers residents. Linda concludes, "It gives her mother great pleasure to know that she is the vehicle for delivering care to the Towers community...one that opened its arms to her when she felt displaced and disconnected from her previous life, and made her feel at home once again."

/ FRAN WALLNAU FAMILY ENDOWMENT FUND AT THE TOWERS /

Fran Wallnau has lived at the Towers for eight years. For seven of those years, she has managed the Towers Vine Gift Shop. After “remodeling it twice” and supervising 25 people working five days a week, she sees no reason “to retire” from this volunteer position when she turns 95 this May. “I’m doing something from my heart that I really enjoy. My family was proud of my activities,” she says. “So, it was very touching when just prior to the Tower’s 50th anniversary celebration kickoff, my children told me they wanted to leave this fund...a legacy for the future.”

A native of New Haven, Fran Wallnau was married to her husband David for 62 years when he passed away. Her Westville nest emptied, as her son Larry would

settle in Rochester, New York, and her daughter Susan would marry Donald Kaletsky and move to Milford to raise a family. Wallnau knew it was time for a change. Would the Towers be a good fit? It was. “A new life was emerging and I became very involved.”

Ever modest, she insists “a bit of retail background” plus years of being a stay-at-home mom “may have boosted” her impressive managerial skills. “The gift shop is busy with lots of customers and I’m just as busy.” She co-chairs the Towers’ calendar committee and takes part in “many other activities.” At almost 95, Fran Wallnau emphatically states, “I feel very strongly that other seniors can have as rich a life as I’m currently enjoying at the Towers.”

“I feel very strongly that other seniors can have as rich a life as I’m currently enjoying at the Towers.”

— Fran Wallnau

/ TOWERS RESIDENTS' ASSOCIATION FUND IN HONOR OF HYL A AND BARRY VINE /

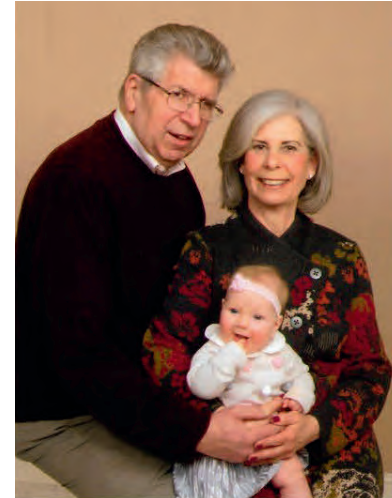
"It is important to understand Barry and Hyla Vine's generosity knows no boundaries...they continue to care and do everything they can to enrich the lives of our elderly. They're always there for us!" says Vivian Kantrow, the Towers Development director. "The Vine Gift Shop, a Towers mainstay, provides a volunteer job for 40 seniors while raising vital funds for programs and activities."

Barry Vine recounts, "About 20 years ago, I began bringing a few things to the gift shop ladies to sell. I started by donating some costume jewelry from my business, and then added some gift items and it just grew from there. There's this personal connection which continues until this day."

"When I go to the Towers, it's like going home," he offers. The structure represents "an extension" of his boyhood days spent on Legion Avenue. "If you follow Legion up to Oak Street, you basically come to the Towers. That's where my father's store was located, where I first became involved in the JCC, and where I started my business. Today, when I see the functionality of the people living there and their feeling of community, it duplicates the special neighborhood atmosphere that I grew up in."

"Barry and Hyla have supported the gift shop from the very beginning and have been helpful in so many ways," says Ellen Duboff, the Treasurer of the Towers Residents Association. "We wanted to make sure they receive the recognition they truly deserve." Isidor (Izzy) Juda, the current president of the Residents Association, cites "two reasons" for establishing this fund. "First of all, we did this to honor the Vines for all the good they do for us. Secondly, we did it to help perpetuate the Towers. We hope that more people will continue to donate to this fund so it will grow."

Barry Vine agrees. "The Towers has real needs. It's important to recognize the value and significance of this place, for others to participate and lend support. Somebody's got to do it! For the people who live there...for future residents, their families, and our entire community."



FUNDS AT THE JEWISH FOUNDATION TO BENEFIT TOWER ONE/TOWER EAST

David A. Beckerman Family Fund for the
Towers Foundation

Ruth Shiffrin Blum Family Fund

Beatrice Briener Fund for the benefit of the Towers*

Cedarbaum Family Fund for Transportation for
Towers Residents

Adele Edelmuth Memorial Fund for Residents with
Cognitive Impairment at Tower One/Tower East

Jack Evans Endowment for the benefit of Tower One/
Tower East

Dorothy Giannini-Meyers Fund for the benefit of
the Towers

The Dorothy Giannini-Meyers Tower One/Tower East
Philanthropic Fund

Dr. Milton & Gladys Godfried Fund for Tower One/
Tower East Health Center

Dr. Milton & Gladys Godfried Endowment Fund for
the benefit of Tower One/Tower East

Gladys Godfried Memorial Garden Fund, Endowed by
her husband Dr. Milton Godfried

Gordon Family Fund for the benefit of the Towers*

Eva Kahn Endowment Fund for the benefit of Tower
One/Tower East

Barbara H. Katz Fund for Assistance to Resident
Support Services at Tower One/Tower East

Robert Katz Family Fund for the benefit of the Towers*

Koral Family Fund for the benefit of the Towers*

Zelda Kroogman Fund for the benefit of Tower One/
Tower East

James M. Shure Fund for the Towers in Memory of
Beverly Levy*

Nathan Sokoloff Fund, Endowed by Heidi & Tracy
Saxe, for the benefit of the Towers*

Tower One/Tower East Community One Event Fund

Towers 50th Anniversary Endowment Fund*

Tower One/Tower East Endowment Fund

Towers Endowment in Honor of Evelyn Siegal*

Towers Residents' Association Fund in Honor of Hyla
and Barry Vine*

Towers Endowment in Honor of Fran Wallnau*

Hyla & Barry Vine Family Endowment for the Towers*

All funds as of 12/31/17.

* Indicates new fund in
2017 in Honor of Towers'
anniversary.

/ SCHOLARSHIP OPPORTUNITIES THROUGH THE JEWISH FOUNDATION /

COLLEGE SCHOLARSHIPS

Mary Taylor Friedler Memorial Scholarship Fund

This scholarship is not needs based. This scholarship was established in 1991 with an initial gift from Saul Friedler in memory of his wife to provide a college scholarship to a Jewish high school senior from Greater New Haven. The scholarship requires an essay concerning what peace, justice, and righteousness mean to you and your Judaism. Awards average \$1,000. Awards are based on strength of the essay.

Stuart J. Drell Scholarship Fund

The Stuart J. Drell Scholarship Fund was established in 2001 at Congregation Beth Israel in Scotch Plains, New Jersey. When Renee Drell relocated to Connecticut, she transferred the fund to the Jewish Foundation of Greater New Haven and it now awards scholarships to high school seniors headed off to college. Awards are \$1,000, and applicants must be from a Jewish household in Connecticut and entering their freshman year of college.

Awards are based on the strength of the application (which requires an essay) and financial need.

Emma Kohn Podoloff Scholarship Fund of the National Council of Jewish Women's Greater New Haven Section

The Emma Kohn Podoloff Scholarship Fund of the National Council of Jewish Women's Greater New Haven Chapter at the Jewish Foundation sponsors scholarships to advance the scholastic and vocational education of Jewish high school seniors from Greater New Haven. An academic average of "B" or better and verified financial need qualifies a student to be considered. Awards average \$1,500. The application includes an essay and three recommendations. Awards are based on the strength of the application and financial need.

All scholarships are for high school seniors from Jewish households. All applications must be completed online by May 1. All applications are confidential and anonymously reviewed by a scholarship committee.

Go to www.jewishnewhaven.org/scholarships for more information, a list of qualifying programs, and application requirements.

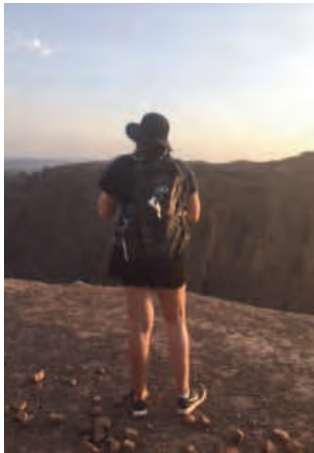
SYNAGOGUE SCHOOL SCHOLARSHIPS

Jewish Scholarship Initiative for Synagogue Schools (JSI)

Through the generosity of a donor in our community, JSI is able to provide need-based assistance for New Haven area synagogue schools. Assistance from JSI supplements other scholarships. The deadline for JSI application submission is October 19, 2018.

ISRAEL EXPERIENCE SCHOLARSHIPS

The Jewish Foundation Israel Experience Scholarship Program enables local Jewish students ages 14-19 the opportunity to participate in an Israel experience to develop and enrich their Jewish education and reinforce their Jewish identity. The Jewish Foundation provides scholarships for both short-term (minimum of three week program) and long-term organized Israel educational programs. Greater New Haven youth ages 14-19 are eligible. For 2018 summer trips, applications are due by March 9, 2018. For the 2018-2019 gap or academic year programs, applications are due by May 4, 2018. An essay and two recommendations are required. All applications are confidential and anonymously reviewed by the Israel Experience Scholarship committee.



Mia Tougas in Israel

Mia Tougas – Scholarship Recipient

I have always identified as a Jew and I always will. This past summer, thanks to the help of the Jewish Foundation of Greater New Haven, I traveled to Prague, Poland, and Israel. In Prague and Poland I saw both the vibrant life of Jews as well as the horrors of the last century. Then, in Israel, I traveled the roads our ancestors took through the Negev, prayed at the Western Wall, and enjoyed a glorious sunrise atop Mt. Masada. These experiences deeply affected me and I look forward to sharing them with younger teens.

Chavaya means “experiences.” In the middle of the trip, my group was split up and we each engaged in different activities for four days. The chavaya I chose was archaeology, which quickly turned into one of the highlights of my trip. I truly enjoyed making new friendships and digging deeper into Israel’s history (pun intended). I personally excavated a pot that still had some oil in it, from hundreds of years ago.

The two weeks following I got to spend time learning about Israel’s history and establishment. During those weeks, I developed even deeper relationship with Israel and the Jewish culture that goes with it.

My most sincere thanks to the JFGNH for supporting a life-altering Jewish experience.

Sophia Bruce – Scholarship Recipient

In July, Habonim Dror North flew 70 Jewish teens to Israel on a Delta flight from JFK to Ben Gurion International Airport in Tel Aviv. Each teen hailed from one of the seven Habonim Dror North America camps across the continent; camps that had encouraged the discussion of labor Zionism and social justice from a young age. Our goal was more than tourism. We were on a substantial mission to interact with the country’s inhabitants, both Israeli and Palestinian, to gain perspective, to explore our individual connections to Zionism, and to create bonds between ourselves; members of a movement that will continue to interact and actualize our values for years to come.

/ ISRAEL SCHOLARSHIPS, CONT. /

We spent that first July night at Kibbutz Ravid in the quiet hills of Emek HaYarden, the lights of Tiberias blanketing the Kinneret to the east. The Kibbutz was run by Habonim Dror's sister movement, HaNoar HaOved VeHalomed, and was populated both by Israelis in the sister movement and by motivated Habonim Dror members, young adults like us, that had made aliyah. The Kibbutz was a functioning actualization of labor Zionism. That night I met my Israeli, American, and Canadian madrichim. I met the kids that I would sweat through 109-degree hikes with, build rafts with to sail across the Kinneret, and whisper with in the dark humidity of hostel bathrooms. I met the kids I would agonize with over the attractive Israeli high-schoolers we would be interviewing in a three-day social seminar. I met the kids I would argue with about our identities as diaspora Jews, and hug 20 times over before leaving JFK airport in August.

We, the teens on Habonim Dror's MBI Israel trip, will shape the movement together, build together, and some of us will make aliyah together. On this trip I met the future of Habonim Dror, and was embraced into the actualization of the ideals our movement upholds in Israel, the center of Judaism, and the center of our movement.

Mia Sandberg – Scholarship Recipient

This past summer I experienced a once-in-a-lifetime Journey. I was lucky enough to travel around Israel with all of my best friends through the Sam Cohen Foundations Dor 'l Dor Program. This past summer I learned and experienced more than I had ever imagined I would. I have anticipated this trip ever since I began sleepaway camp, seven years ago, as it's the last summer our group spends together before becoming counselors. I tried my best to prepare for every early morning hike, and the daily 100-degree weather, but nothing was able to prepare me for the journey I was about to embark on. It is nearly impossible to share every small and incredible detail of my five-week trip, but I will do my best.

Our amazing and jam-packed, day-to-day itinerary helped make sure we didn't waste a second while traveling around Israel. Our first stop was Jerusalem which helped us get the initial feel of Israel, the place we all learned about throughout the years. I saw a significant number of rabbis, cats, and temples in this city. As the journey continued, I was able to explore other aspects of Israel including many amazing and inspiring museums and historical sights. I was also able to learn about and dive deeper into the history of my religion and people. Recognizing the sacrifices that were made for me to be standing in the holy land made this experience even more special and life changing.

This trip allowed me to get the full experience of Israel. I went from bartering at shuks, to swimming in the Dead Sea covered in mud, to waking up at 3 in the morning to hike through the Negev. I was able to meet different types of Jews, like Ethiopian Jews who traveled thousands of miles on foot just to reach the holy land. I volunteered with children in need of heart surgery and had many conversations and instruction on becoming an effective leader in my community.

Overall, this indescribable five-week journey helped shape me to become the proud Jew that I am today. With my new knowledge about my culture and history, I am excited to share all my experiences with the people around me. I can't thank the Jewish Federation of Greater New Haven enough for their generosity and for helping make my dream to visit Israel a reality!



Sophia Bruce in Israel with Habonim Dror



Mia Sandberg in Israel



“The Jewish summer camp experience affects children in countless ways and opens their hearts to the joy of being Jewish.

“We are passionate about making that experience possible for every Jewish child and deeply grateful to all of our partners who share our commitment to that goal.”

— Jeremy J. Fingerman

JEWISH OVERNIGHT CAMP SCHOLARSHIPS

Jewish Foundation Launches One Happy Camper Program

The Jewish Foundation of Greater New Haven is pleased to announce the launch of the One Happy Camper program in partnership with the Foundation for Jewish Camp (FJC).

The initiative includes needs-blind incentive grants of up to \$1,000 for first-time campers to Jewish overnight camp, as well as needs-based scholarships for first-time and returning campers. Campers must reside in the Greater New Haven catchment area and attend an overnight Jewish camp in North America.

Greater New Haven is the newest community to make Jewish camp a priority in their area. Since 2006, FJC has partnered with more than 100 North American federations, foundations, camp movements, and camps, as well as the Jim Joseph Foundation (JWest), and the Harold Grinspoon Foundation (PJ Goes to Camp) to provide more than 70,000 grants totaling almost \$70 million. One Happy Camper grant recipients, just like all campers, are being infused with Jewish education, awareness, and identity while having fun; returning to Jewish camp summer after summer.

The challenge of passing along Jewish connection and commitment to the next generation has become one of the most important concerns of the American Jewish community. Based on CAMP WORKS, the 2010 study by FJC that examined the long-term impact of Jewish overnight camp, there is compelling evidence that camp is a proven means of building Jewish identity, community, and leadership. It found that adults who attended Jewish overnight camp are 30 percent more likely to donate to a Jewish federation, 37 percent more likely to light candles regularly for Shabbat, 45 percent more likely to attend synagogue at least once a month, and 55 percent more likely to feel very emotionally attached to Israel.

“We are thrilled to be able to partner with One Happy Camper,” said Jewish Foundation of Greater New Haven Executive Director Lisa Stanger. “Jewish overnight camps are a life-altering experience. This is a major priority for our community and an important investment for us. We want to enable more children to experience Jewish camp and we are excited we can help our local families to do this.” Stanger added, “We hope to spread the word so that many families take advantage of this opportunity.”

The Foundation for Jewish Camp, with support from the Jim Joseph Foundation and the AVI CHAI Foundation, has successfully established new business models for Jewish camps and created a forum to pilot new educational models by integrating Jewish learning with activities that kids are passionate about – the environment, performing arts, science, sports, and outdoor adventure. To find out about 195 different Jewish overnight camps, including science and technology camps, movement camps, adventure camps, travel camps, special-needs camps, and general camps, go to www.onehappycamper.org.

Families can find camps and apply for first-time camper incentive grants by visiting www.OneHappyCamper.org. Families can apply for needs-based aid for overnight Jewish camp as well as view the Greater New Haven catchment area at www.jewishnewhaven.org/scholarships.

/ DONATIONS /

\$2.4 MILLION IN TOTAL DONATIONS

PACE FUNDS for The Jewish Federation of GNH

Norman and Caron Alderman Pace Fund
Benjamin and Freda Cohen Memorial Pace Fund
Lindy Lee Gold Pace Fund
Green and Sklarz Foundation Pace Fund
Kagan Family Pace Fund
Benjamin Liveten Perpetual Annual Campaign Fund
Hap and Stacey Jackson Perkins Pace Fund
Jodi and Richard Pollack Family Pace Fund
Eric Ravid Family Pace Fund
Marilyn Saltzman Lion of Judah Endowment Fund

Donor Advised/Family Philanthropy Funds

Caron and Norman Alderman Family Fund
Judith and Stephen August Philanthropic Fund
Samuel and Barbara Bobrow Family Fund
Alayne and Martin S. Burger Philanthropic Fund
Andrew Eder Family Fund
Arlene and Marshal Elovich Foundation
Feldman Family Philanthropic Fund
Tillie L. and Albert B. Friedman Fund for
Jewish Education in Honor of Sophia, Aaron
and Benjamin Bruce
Fleischman Family Foundation
Israel and Adele Gordon Family Fund
Barbara Greenberg Philanthropic Fund of the
Jewish Foundation of GNH
Hurwitz Family Fund
Joan and Alan Kliger Family Philanthropic Fund
Leo and Libby Nevas Collaboration Grant Fund
Jeanette and Dan Oren Family Fund
Daniel and Lisa Price Philanthropic Fund
Jo-Ann and Michael P. Price Family Fund

Howard J. Reiter and Jody P. Ellant
Philanthropic Foundation

Marcia and Stanley F. Reiter Philanthropic Fund
Erik and Jean Rosenthal Philanthropic Fund
Kenneth Rosenthal and Catherine Forman
Philanthropic Fund

Stephen and Marilyn Saltzman Philanthropic Fund
Nanci and Craig Skar Family Fund
Sklarz Family Philanthropic Fund
Rosalyn and Kenneth Sperling Family Foundation
Barry and Hyla Vine Family Fund

Custodial/Agency Owned Funds

Noam Benson-Tilsen Fund for BEKI Kids
at Camp Ramah
Borick Family Endowment for Special Education
for Youth (for Beki)
Herbert Brockman Rabbinic Endowment Fund
Congregation Beth Shalom Rodfe Zedek
Endowment Fund
Congregation Mishkan Israel Endowment Fund
Daughters of 1853 Nursing Scholarship Fund
Gordon Family Fund for the benefit of the Towers
The Legacy L'chayim Fund for Congregation
Beth El-Keser Israel
Wendy Gross Endowment Fund for
Temple Beth Tikvah
Koral Family Fund for the benefit of the Towers
Reiter Ellant Fund for Ezra Academy
Temple Beth David Jaffe Construction
Endowment Fund
Temple Beth David Endowment Fund
Temple Emanuel Endowment
Towers 50th Anniversary Endowment Fund

Towers Endowment in Honor of Evelyne Siegal
Towers Residents' Association Fund in Honor of
Hyla and Barry Vine
Towers Endowment in Honor of Fran Wallnau
Westville Synagogue Endowment Fund

Designated/Restricted Funds

Beckerman Family Supporting Foundation, Inc.
Endowment and Education Fund for New Haven
Hebrew Day School"
Saul and Hope Bell Memorial Fund for Congregation
Beth El-Keser Israel
Benjamin and Freda Cohen Memorial Fund for
Hebrew High School of New England
Benjamin and Freda Cohen Memorial Fund for
Jewish Family Service
Benjamin and Freda Cohen Memorial Fund for
Jewish Programs for the Frail and Elderly
Benjamin and Freda Cohen Memorial Fund for
the Center of Jewish Life and Learning
Friends of the Jewish Coalition for
Literacy Endowment Fund
Charlotte W. and Donald Perloth Scholarship Fund
Sydney A. Perry Education Fund for Jewish Leadership
Ravski Family Fund in Memory of Ruth and Philip
Ravski and Perla and Jerry Ravski for the benefit of
March of the Living and Holocaust Education
Sklarz Family Fund for the benefit of the Rabbi's
Endowment at Congregation Mishkan Israel
Hyla and Barry Vine Family Endowment for
the JCC Camp
Hyla and Barry Vine Family Endowment for the Towers
Women of Vision Society

Build a Tzedakah/Youth Philanthropy Funds

Karley Madison Bayer Fund
Daniella Perry Kingsley Tzedakah Fund

Unrestricted Funds

Stephen and Judy August Unrestricted Fund
Benjamin and Freda Cohen Memorial Fund for
the Jewish Foundation of GNH
The Harvey Eckhardt Family Fund in Memory of
Ann and Samuel Eckhardt

What will your Jewish Legacy be?



The Cobern family has created a legacy for their synagogue – Temple Beth David of Cheshire

“Our Temple has been a pillar of our life since we moved here nearly forty years ago. Both of our daughters became b’not mitzvah there, and our first grandson will become bar mitzvah in March. We want to ensure that our future generations will share the same blessings, so we have contributed toward its legacy.”

– Dorie & Marty Cobern



Jewish Foundation
OF GREATER NEW HAVEN

newhavenjewishfoundation.org



jewishlegacynewhaven.org

For more information about Create A Jewish Legacy, contact Lisa Stanger,
(203) 387-2424 x382, lstanger@jewishnewhaven.org

/ ALL CHARITABLE DISTRIBUTIONS /

TOTAL CHARITABLE DISTRIBUTIONS

\$2,817,517



LOCAL JEWISH ORGANIZATIONS
AND SYNAGOGUES

\$2,050,463



NON-LOCAL JEWISH

\$453,399



LOCAL SECULAR

\$99,995



NON-LOCAL SECULAR

\$213,660

/ BREAKOUT IN LOCAL JEWISH DISTRIBUTIONS /



LOCAL JEWISH ORGANIZATIONS & SYNAGOGUES

\$2,050,463



JEWISH FEDERATION OF GREATER NEW HAVEN

\$784,777*

*Includes distributions from Restricted (PACE/LOJE) Funds, Donor Advised Funds, and Unrestricted Funds



SYNAGOGUES

\$413,883



DAY SCHOOLS

\$249,432



LOCAL JEWISH OTHER

\$215,175



JEWISH FAMILY SERVICE/
JEWS IN NEED

\$160,636



JCC

\$160,897



JEWISH EDUCATION

\$94,486



JEWISH AGED
AND THE TOWERS

\$117,484



CAMP
LAURELWOOD

\$27,521

BY ORGANIZATION

During this fiscal year, the following organizations received distributions from the Jewish Foundation that totaled over \$2.8 million.

**CREATE A LEGACY
FOR WHAT IS
IMPORTANT
TO YOU**

/ CHARITABLE DISTRIBUTIONS /

2017 FISCAL YEAR

Designated/Restricted Funds Distributions

\$524,582

Anti-Defamation League
Albert Einstein College of Medicine
American Committee of the Weitzman Institute of Science
American Friends of Yesiva D'Mir
American Society Technion Inst. of Israel
Auschwitz Jewish Center
Beth Chana Academy High School
Birthright Israel
B'nai B'rith Youth Organization
Boy Scout Troop 202
Boy Scout Troop 41
Brandeis University
Camp Laurelwood
Camp Ramah
Center for Jewish Life and Learning/JCC of GNH
Congregation Beth El-Keser Israel
Congregation Beth Shalom Rodfe Zedek
Congregation B'nai Jacob
Congregation Mishkan Israel
Congregation Or Shalom
CT Freemasons Foundation
CT Yankee Council BSOA
Dor L'Dor Cohen Camps
Ezra Academy
Ezrat Torah
Habonim Dror
Hadassah Medical Relief Assoc
Hebrew High School of New England
Hebrew University Association
International Rescue Committee
Israel Lacrosse Association
Jewish Agency for Israel
Jewish Cemetery Association of GNH
Jewish Coalition for Literacy of GNH
Jewish Community Center of GNH
Jewish Community Center - Send a Kid to Camp
Jewish Community Relations Council of GNH
Jewish Family Service of GNH
Jewish Family Service - Food for the Needy
Jewish Federation of GNH
Jewish Federation of GNH - March of the Living
Jewish Foundation of Greater New Haven
Jewish Historical Society
Jewish Home for Children
Jewish Home for the Elderly
Juvenile Diabetes Research Foundation Int'l
Kosher Kitchen at Yale University
Leukemia & Lymphoma Society of America
Milford Hospital
Neighborhood Music School
NFTY in Israel
NH Register Fresh Air Fund
Orchard Street Shul
Peabody Museum
Planned Parenthood
Society for Prevention for Cruelty to Animals in Israel
Solomon Schechter Day School
Southern Connecticut Hebrew Academy
(formerly New Haven Hebrew Day School)
Syracuse University - Holocaust Education
Temple Beth David
Temple Beth El
The Shalom Hartman Institute of NA
Torah Umesorah
Towers Foundation, Inc.

Union Orthodox Jewish Congregation
United Way of GNH
University of Michigan - School of Business
University of New Haven
US Holocaust Memorial Museum
Wildlife Conservation Society c/o Bronx Zoo
World Wildlife Fund
Yale New Haven Children's Hospital
Yale New Haven Hospital - Interfaith Chapel at YNHH
Yale New Haven Hospital - Interfaith Chapel
St Raphael
Yale New Haven Hospital - Pediatric Hematology
Yale New Haven Hospital - St Raphael's Sister Ann
Virginie Grimes Health Center
Yeshivat Torah Vodaath
Young Israel of New Haven
Westville Synagogue

Family Donor Advised/ Philanthropic Fund Distributions

\$1,364,244

Accion International
Agahozo-Shalom Youth Village Inc
Alexander Muss High School in Israel
Alliance for Global Justice
Alliance for Greater New York
Alventures Media
Alzheimer's Disease & Related Disorders Assoc Inc
America-Israel Cultural Foundation
American Cancer Society
American Civil Liberties Union Foundation
Americans for Peace Now
American Foundation for Suicide Prevention
American Friends of Bnei Akiva Yeshivas in Israel
American Friends of Jordan River Village

American Friends of the Israel Philharmonic
Orchestra Inc
American Friends Service Committee
American Jewish Committee Atlanta
American Jewish Congress
American Jewish Joint Distribution Committee
American Jewish World Service
American Support for Israel
American Theater Wing
Amity Teen Center
Amnesty International USA, Inc.
Anti-Defamation League
Arab American Institute Foundation
Atlanta Beltline Partnership
AVODAH Jewish Service Corp
Bend the Arc
Bill of Rights Defense Committee Inc
B'nai Brith Youth Organization
Black River Good Neighbor Services
Board of Trustees of the Glide Foundation
Boys Town Jerusalem Foundation of America
Bridgeport Rescue Mission
Broadway Cares/Equity Fights Aids Inc
Brookline I L Peretz School of the Workmen's Circle Inc
CAMERA
Camp Gan Israel
Camp Laurelwood
Center Children's Advocacy
Central Fund for Israel
Chabad of the Shoreline
Chabad Synagogues, Inc
Chai Lifeline
Charter Oak Cultural Center
Chester Historical Society
Children's Tumor Foundation

Church World Service
Coast Guard Foundation
Colby College
Columbia University Business School
Community Labor United
Compassions & Choices Gift Program
Congregation Adath Israel
Congregation Ahavath Shalom
Congregation Beth El-Keser Israel
Cong Beth Shalom Rodfe Zedek
Congregation B'nai Israel
Congregation B'nai Jacob
Congregation Mishkan Israel
Congregation Mishkan Israel Nursery School
Congregation Or Shalom
Congregation Shir Shalom
Congregation Sinai
Connecticut Audubon Society
Connecticut Children's Medical Center
Connecticut Food Bank
Connecticut Fund for the Environment
Connecticut Public Broadcasting
Connecticut Zoological Society
Cornell University - Cornell Hillel Society
Death with Dignity Nat'l Center
Debra of America
Discovery Museum
Emory University
Emanah of America
Environmental Defense Fund
Ezra Academy
Facial Paralysis & Bells Palsy Foundation
Fair Haven Community Health Clinic
Fairfield Historical Society
Fairfield University

/ CHARITABLE DISTRIBUTIONS, CONT. /

Farm & Wilderness Foundation
Fed for Jewish Philanthropy of Upper Fairfield County
Fellowship at Auschwitz for the Study of Professional Ethics
Fifth Avenue Synagogue
First Nations Development Institute
Foundation for the Arts and Trauma Inc
Foundation for Facial Recovery
Foundation for the MA Eye & Ear Infirmary
Fountain House
Friends of Jewish Renewal in Poland
Friends of AKIM USA Inc
Friends of Woodstock School
Glide Foundation
Goodspeed Opera House
Grassroots International
Greater Washington Coalition for Jewish Life
Greater Washington Jewish Coalition Against Domestic Abuse
Green America
Habitat for Humanity
Habitat for Humanity of Coastal Fairfield
Hamden Hall Country Day School
Hebrew Congregation of Woodmont
Hebrew High School of New England
Hebrew Immigrant Aid Society
Hispanic Federation - Disaster relief
Hole in the Wall Gang
Homes with Hope, Inc
Human Rights First
Inner City Games Foundation
Institute for Food & Development Policy, Inc
International Festival of Arts & Ideas
International Labor Rights Education and Research
International Rescue Committee

Israel Cancer Research Fund
James Blackstone Memorial Library Assoc.
Jewish Cemetery Association of GNH
Jewish Community Center - Fire Fund
Jewish Community Center - Capital Campaign
Jewish Community Center of GNH
Jewish Community Center of GNH - Send a Kid to Camp
Jewish Community Center of GNH - Yeladim
Jewish Family Service
Jewish Family Service-Food for the Needy
Jewish Family Service - Food4Kids
Jewish Federation Assoc of CT
Jewish Federation of Atlanta
Jewish Federation of GNH
Jewish Federation of GNH - March of the Living
Jewish Federation of GNH - Hurricane Harvey Assistance
Jewish Federation of North America
Jewish Federation of North America/Beit Zinger
Jewish Foundation of Greater New Haven
Jewish Historical Society
Jewish National Fund
Jewish Senior Services
Jewschool, Inc
Just One Life
Katharine Hepburn Cultural Arts Center
Kids Empowered by Your Support
Leukemia & Lymphoma Society
Long Island Soundkeeper Fund
Long Wharf Theater
Macular Degeneration Association
MADRE
Magevet
Make a Wish Foundation of CT

Manhattan Jewish Experience
Masorti Foundation
Masorti Foundation for Conservative Judaism
Meyyim Hayyim Living Waters Community
Mazon
Mercy Learning Center
Merkaz High School of Judaic Studies
Mount Sinai Jewish Center
Mothers Against Drunk Driving
Muslim Advocates
Muslim Justice League
Names Project Foundation
NAMI CT
Natural Resources Defense Council
Neighborhood Music School
Neighborhood Studios of Fairfield County
New Haven Legal Assistance
New School for Social Research
New York University School of Law
Newport Performing Arts Center
Next Generation Men & Women
NYC Outward Bound Center
Oberlin College
Orchard Street Shul
Ovarian Cancer National Alliance
Oxfam America
Park Slope Jewish Center
Phi Beta Kappa Society
Philadelphians Organized to Witness Empower & Rebuild
Planned Parenthood
Poly Prep Country Day School
Population Connection
Progressive Education & Research Assoc
Quinnipiac University

Rainforest Alliance
 Reed College
 Resist
 Ronald McDonald House of CT
 Rosenberg Fund for Children
 Sentencing Project
 Sharsheret
 Sigma Alpha Mu Foundation
 Simon Wiesenthal Center
 Simply Smiles
 Sinai Special Needs Institute
 Smith College
 Southern Connecticut Hebrew Academy
 (formerly New Haven Hebrew Day School)
 Southern CT State University
 Southern Poverty Law Center
 Technoserve
 Temple Beth Sholom
 Temple Beth Tikvah
 Temple Emanuel
 Temple Sinai
 The ASCAP Foundation
 The Choate Rosemary Hall Foundation, Inc
 The Corporation of Haverford College
 The Humane Society of the US
 The Justice Education Center
 The Kennedy Center, Inc. - Autism Project
 The Loomis Chaffee School
 The New Israel Fund
 The New School, Arts Integrity Initiative
 The PJ Library
 The Seeing Eye, Inc
 The Southern Poverty Law Center
 The Trustees of Princeton University -
 Jewish Life Annual Fund

The Westville Synagogue
 Towers Foundation
 Union for Reform Judaism
 Union of Concerned Scientists
 Union Orthodox Jewish Congregations
 United for a Fair Economy
 United Synagogue of Conservative Judaism
 United Way of Greater New Haven
 United Way of Milford
 University of Connecticut - Hillel
 University of Pennsylvania
 US Holocaust Memorial Museum
 USA for UNHCR
 Westville Synagogue
 WNET
 Women for Women International
 Women's Center of Greater Danbury
 Woodbridge Land Trust
 World Jewish Congress
 Wounded Warrior Project
 Yale New Haven Hospital
 Yale New Haven Hospital - Smilow Center
 Yale School of Medicine
 Yale School of Medicine - Discovery to Cure
 Yale University
 Yeshivas Beis Dovid Shlomo
 Young Israel of Bal Harbour
 Zionist Organization of America
 Young Judaea

Total PACE/LOJE Distributions

\$427,841

Build a Tzedakah Funds

\$3,544

American Friends of Magen David Adom
 Anti-Defamation League of Connecticut
 Big Brothers Big Sisters of Southwest CT
 Birthright Israel
 Camp Ramah
 Chabad at Yale
 Clifford Beers Clinic
 Community Soup Kitchen
 Congregation Adat Reyim
 Congregation B'nai Jacob
 Congregation Beth El-Keser Israel
 Congregation Or Shalom
 Ezra Academy
 Foster Dogs
 Habonim Dror North America
 IRIS
 JDRF
 Jewish Community Center of GNH
 Jewish Family Services
 Jewish Family Services - Food 4 Kids
 Jewish Federation of GNH - Teen Education
 Jewish Federation of GNH March of the Living
 Jews United for Justice
 Mazon
 National Outdoor Leadership School
 National Ramah Commission
 New Israel Fund
 Saint Baldricks Foundation
 Tower Foundation
 Treatment Advocacy Center
 Tzedek DC Inc
 US Holocaust Memorial Museum

Custodial/Agency Owned Funds Distributions

/ CHARITABLE DISTRIBUTIONS, CONT. /

\$271,933

Congregation Beth El-Keser Israel
Congregation Beth Shalom Rodfe Zedek
Congregation Mishkan Israel
Ezra Academy
Hebrew High School of New England
Jewish Community Center of GNH
Jewish Family Service of GNH
Jewish Historical Society
Temple Beth David
Towers Foundation, Inc.

\$205,990

Jewish Federation of Greater New Haven
Jewish Federation of North America - Birthright Israel
Towers Foundation

Charitable Gift Annuity Remainders Distributions

\$7,510

Jewish Federation of GNH
Beth Israel Wallingford
Hadassah Women's Zionist Org of America

Charitable Lead Trusts Distributions

\$11,873

Camp Laurelwood
Jewish Family Service
Jewish Community Center of GNH

Unrestricted Funds Distributions

Total Charitable Distributions

\$2,817,517

Note: Additional distribution from Jewish Federation-owned unrestricted funds of \$3,283,618; see page 56 for total distribution (not included in above total).

/ FUND AND GIFT DESCRIPTIONS /

WITH THE JEWISH FOUNDATION OF GREATER NEW HAVEN, YOU CAN CREATE A LEGACY FOR YOUR FAMILY AND YOUR COMMUNITY.

You can make gifts to the Jewish Foundation through a variety of different vehicles. The choices and opportunities available can provide tax benefits and, most importantly, provide lasting legacies for the organizations, institutions, and programs that are most important to you.

Appreciated Property

By donating long-term appreciated property (like stocks and mutual funds) to the Jewish Foundation, you may be able to reduce or eliminate the capital gains tax for that property and receive an income tax deduction for the appreciated value of the property.

Charitable Bequest or Trust Designation

Including the Jewish Foundation as a beneficiary of a will or trust is a simple and powerful way to create a family legacy. During your lifetime, your assets are not affected, you can reduce your taxable estate, and you can provide that your gift be designated for specific charitable purposes, agencies, and/or your synagogue.

Charitable Gift Annuity

A charitable gift annuity is like a charitable retirement account. It is established with a one-time gift, and it provides a fixed annual payment for life and an income tax deduction, and you can designate the remainder for specific charitable purposes, agencies, and/or your synagogue.

Charitable Lead Trust

This type of trust provides a current gift to charity and a deferred gift to your family members. A charitable lead trust will make annual distributions to your designated charities, and, at the end of the trust term,

the remaining trust assets will be distributed to the family members (or other individuals) whom you have designated.

Charitable Remainder Trust

This type of trust will provide annual income payments to you and/or designated family members or individuals. At the end of the trust term, the remainder will be distributed for the charitable purposes, agencies, or synagogues that you have designated.

Donor-Advised/Philanthropic Funds

This fund allows the donor (or his or her appointed successor) to recommend distributions to any qualified not-for-profit organization. These funds can be established with a minimum gift of \$10,000 and are a wonderful way to involve the family in giving.

IRA or Retirement Assets

You can maximize what your heirs receive by reducing taxes—to do this, leave a portion of your retirement plan to the Jewish Foundation and leave other assets to your heirs. In addition, if you are 70½ or older, you can make a charitable rollover from your IRA with no tax consequences.

Life Insurance

Consider transferring the ownership of an insurance policy to the Jewish Foundation—you will receive an income tax deduction for the current value of the policy, future premium payments will be tax deductible, and the donated policy will no longer be part of your taxable estate.

PACE and LOJE Funds

PACE and LOJE funds perpetuate support for the Jewish Federation of Greater New Haven's annual campaign through present and future commitments of cash, stock, insurance, charitable annuities, trusts, and bequests. Named PACE (Perpetual Annual Campaign

Endowment) funds can be established with a minimum commitment of \$10,000. Named LOJE (Lion of Judah Endowment) funds perpetuate a women's annual Lion of Judah (\$5,000) campaign gift and can be established with a minimum commitment of \$100,000.

Designated/Restricted Funds

Donors can establish a named restricted/designated fund for the organization or institution that is most important to them. These funds can be established in honor of a family member, or in memory of loved ones, and will provide annual distributions, in perpetuity, to the designated organization(s). These funds can be established with a minimum gift of \$10,000.

Unrestricted Funds

Donors can establish a named unrestricted fund at the Jewish Foundation with a minimum donation of \$1,000. Unrestricted funds allow the foundation to meet the changing needs of the Jewish community through our grants process and community initiatives. Many community members have established such funds in honor of a special anniversary or birthday, or in memory of a loved one.

Designated Custodial/Agency Owned Funds

Many local Jewish agencies, synagogues, and not-for-profit organizations have entrusted their endowments to the Jewish Foundation for administration and management.

/ PACE AND LOJE /

Consider endowing your annual gift to the Jewish Federation of Greater New Haven's Annual Campaign.

These members of our community through current and planned gifts of cash, insurance, and bequests have established PACE and LOJE funds.

* New Fund 2017

**BE A GOOD
ANCESTOR**

How can you provide for Jewish education, camps, schools, the frail elderly, those in need, the JCC, and for Jews in need abroad and in Israel? With your annual gift to the Jewish Federation of Greater New Haven. And how can you CREATE A JEWISH LEGACY to ensure that future generations of Jews in Greater New Haven and throughout the world are provided for? By establishing a Perpetual Annual Campaign Endowment (PACE) or Lion of Judah Endowment (LOJE) fund for the benefit of the Jewish Federation Campaign.

Your PACE or LOJE continues your legacy to our community. Your fund will continue from your generation to the next by distributing to our local federation campaign that provides for our community—in Greater New Haven, Israel, and worldwide.

PACE funds make an impact — this year 17% of the annual campaign is supported by PACE.

Your Jewish legacy can be created during your lifetime with cash, stock, or retirement assets. You can also make a commitment now to establish or add to your fund through your estate or with insurance or retirement assets.

IN 2008, THERE WAS \$1.2 MILLION IN PACE FUNDS. TODAY, THERE IS \$11 MILLION (IN ADDITION, THERE IS ANOTHER \$2 MILLION IN COMMITMENTS TO PACE)!

Josef and Cecle Adler
Lucille Alderman
Norman and Caron Alderman
Anonymous
Sara and Hillel Auerbach
Judy and Stephen August
Brad E. Beckerman
David A. Beckerman Family
David and Sharon Bender Family
Foundation, Inc.
Marjorie and Norman Botwinik
Stanley Botwinik
Frederick A. and Justine Millspaugh
Catlin Family Foundation
Linda & Jesse Cedarbaum
Linda and Jeffrey Chaffkin
Benjamin and Freda Cohen
Donald and Pearl Cohen
Linda and Kenneth Cohen
Scott and Joanna Cooper

Herman & Esther Copelon
Michael Diamond
Irving Eckhardt in memory of his parents,
Nathan and Ida
Frederick M. and Elizabeth P. Edelmuth
Yvette Eder
Eileen and Andrew Eder
Sidney and Arthur Eder
Jack Evans
Dale and Robert Felice
Mary and Jacob Falek
Fischman Family
Gerald and Marilyn Fishbone
Fleischman Family
Joseph Forman
Claire Frankel
Ian Freeman
Frenkel Family
Suzanne Gallant
David P. Gershoni

**THE COMMUNITY WAS THERE FOR YOU. WHO WILL BE THERE FOR THE NEXT GENERATION?
YOU WILL—BY ENDOWING YOUR ANNUAL GIFT WITH A PACE OR LOJE.**

Rose B. and Barbara Gingold
Samuel and Marcella Glazer
Dr. Milton and Gladys Godfried
Leo and Beatrice Gold
Lindy Lee Gold
Barbara Greenberg
Velma and Stuart Grodd
Judith Hahn
Penny Marcus and Allan Hillman
Betsy and Jeffrey Hoos
Heidi & Norman Hurwitz
Jocelyn & Scott Hurwitz
Ruth and Sherman Jacobson
Jewish Foundation of GNH
Gerald Kagan
Cari and Keith Kaplan
Iny and Joel Karp
Katzman Family
Komisar Family
Edward Konowitz
George and Susan Krall
Ilse H. Krevit
Sherman and Evelyn Krevolin
Robert N. & Goldythe B. Langerman
Arthur Allen Leff
Cindy and David Leffell
Marvin and Helaine Lender
Donna and Sidney Levine
Beverly and John Levy
Lichtman Family
Benjamin Liveten
Lawrence A. Loeb
Martin Family
Sam and Rose Merriam Family
Miller-Goodman Families

Boris Mizhen Family
Barbara and Jeffrey Orell
Zelma Pacella
Hap and Stacey Jackson Perkins
Sydney A. Perry
Jodi and Richard Pollack Family
Francine and Alan Ponchick in memory of
Marvin and Norma Schaefer
Hyla Raphael
Eric Ravid Family
Howard Reiter and Jody Ellant
Marcia W. and Stanley F. Reiter
Alan and Elizabeth Kaye Reznik Family
Susan and Stuart Rosenholtz
James Sachs
Marilyn Saltzman

Stephen L. Saltzman
Lewis Savitsky
Shirley F. Scholder
Arlene and Arnold Shanbrom
James M. Shure
Gale and Michael Silverberg
Nate M. Silverstein
Green & Sklarz Foundation*
Sklarz Family
Judy Skolnick
Lisa A. Stanger
Robyn Teplitzky
Shirley and Morris Trachten
David and Stacey Trachten
Barry and Hyla Vine
Melanie Waynik and Wayne Larrison

What will your Jewish Legacy be?



The Birn Family created a legacy for their synagogue, Congregation BEKI

"The synagogues of my youth do not exist anymore. I made a legacy commitment to BEKI to make sure that our family and future generations never have to say that. The BEKI community has supported us spiritually, intellectually, educationally and socially - it is our privilege to be able to support it back now and in the future,"—Harold Birn



Jewish Foundation
OF GREATER NEW HAVEN

newhavenjewishfoundation.org



jewishlegacynewhaven.org

For more information about Create A Jewish Legacy, contact Lisa Stanger,
(203) 387-2424 x382, lstanger@jewishnewhaven.org

/ PLANNED GIFTS /

“Nobody is ever
impoverished through
the giving of charity.”
— Moses Maimonides

**CREATE A LEGACY
FOR WHAT IS
IMPORTANT
TO YOU**

Life Insurance

Ruthann Beckerman
Betty and Alan Feldman
Gerald and Marilyn Fishbone
Ian Freeman
Bonnie K. Goldberg
Betsy S. Hoos
Barbara Lichtman
Sydney A. Perry
Marcia Reiter
Arnold and Arlene Shanbrom
Lisa Stanger
Robyn Teplitzky
Stacey Trachten
Hyla Vine

Legacy Society

Anonymous
David A. Beckerman
Harvey Bixon
Marilyn and Gerald Fishbone
Ian Freeman
Dianne Glater
Norma Greene
Velma and Stuart Grodd
Frank L. Gruskay
Robert H. Horowitz
Ruth & Sherman Jacobson
Joel and Iny Karp
Phyllis Kauffman
Henry S. Harrison and Ruth Lambert
Beverly and John Levy
Hannah and Moses Malkin
Mark Shiffrin
Gale C. and Michael I. Silverberg

Dr. Stephen Squinto and Adrienne Bloch
Barry J. and Hyla Vine
Joan and Milton Wallack

CHARITABLE GIFT ANNUITIES AND CHARITABLE TRUSTS

Charitable Gift Annuity

Phyllis Bausher Charitable Gift Annuity
(for the benefit of Jewish Family Service and
Congregation Mishkan Israel)
Alvin and Irma Evans Charitable Gift Annuity
Betty H. Freedman CGA I-II
Janet F. Gans Charitable Gift Annuity I-II
Ruth and Jerome Gross Memorial Fund for the
benefit of Southern Connecticut Hebrew Academy
Edward Konowitz Charitable Gift Annuity for the
benefit of the Jewish Federation I-II
Rabbi Murray Levine CGA I-VI
Moses M. and Hannah Malkin Charitable Gift Annuity
Norman and Harriet Rashba Charitable Gift Annuity
Norman K. and Elaine S. Silverman Charitable Gift
Annuity for the Jewish Home for the Aged, in
Memory of Louis Silverman, Sophia Silverman,
Morris Straka, Tessie Straka, and
J. William Silverman
Marian Fox Wexler Charitable Gift Annuity

Charitable Remainder Annuity and Unitrust

Anonymous
Harvey C. Bixon 2004 Charitable Trust

Charitable Lead Annuity and Unitrust

Herbert B. and Lillian Wolfson 2005 Charitable
Lead Unitrust

Deferred Charitable Gift Annuity

Ira B. Fink Deferred Charitable Gift Annuity
Karen G. Horowitz Deferred Charitable Gift Annuity

/ PHILANTHROPIC AND DONOR-ADVISED FUNDS /

Field of Interest/Donor-Advised Funds

Tillie L. and Albert B. Friedman Memorial Fund Honoring Sophia, Aaron, and Benjamin Bruce*

The Jacob Fund

Carol Ruth Jacobs Memorial Fellowship Fund for Teachers

Henry and Helene Kasha Fund for the Teaching of the Hebrew Language

Lenny Margolis Athletic Endowment Fund for the benefit of the JCC

Charlotte W. and Donald L. Perloth Scholarship Fund for Jewish Education

Stanley F. and Marcia Reiter Philanthropic Fund for New Haven Hebrew Day School

Stanley F. and Marcia Reiter Philanthropic Fund for Jewish Education

Stanley F. and Marcia Reiter Fund for Westville Synagogue

Mark & Heni Schwartz Family Fund for Jewish Family Service, Westville Synagogue, and Jewish Education*

Tower One/Tower East Philanthropic Fund

Shirley and Morris Trachten Fund to Support Medical Research

Shirley and Morris Trachten Fund for Jewish Education

Martha Sue and Bertrand S. Weisbart Endowment Fund for the benefit of Youth Fitness at the JCC of GNH

Undesignated Philanthropic/Donor-Advised Funds

Anonymous x 2

Caron and Norman Alderman Family Fund*

David and Karen Astrachan Family Fund

Judith and Stephen August Philanthropic Fund

Neil Bersin Philanthropic Fund in Honor of his 50th birthday

Samuel and Barbara Bobrow Family Fund

Bella S. and Bernard Braverman Philanthropic Fund

Alayne and Martin S. Burger Philanthropic Fund

Benjamin and Freda Cohen Philanthropic Fund

Rhoda and Aaron Cohen Fund

Andrew Eder Family Fund

Arthur Eder Family Fund

Arlene and Marshal Elovich Foundation

Samuel Faiman Tzedakah Fund

Feldman Family Philanthropic Fund

The Fischman Family Philanthropic Fund

Gerald and Marilyn Fishbone Family Philanthropic Fund

Fleischman Family Foundation*

Suzanne and Murray Gallant Fund

Gershoni Family Foundation

Marcella and Samuel Glazer Philanthropic Fund

Israel and Adele Gordon Fund

Barbara Greenberg Philanthropic Fund of the Jewish Foundation of GNH*

Eva Grinberg Fund in memory of her parents, Moshe Elhaan and Jesha Benjamin Klein

Judith Hahn Philanthropic Fund

Janice and Robert Horowitz Philanthropic Fund

Hurwitz Family Fund

Dr. Sidney Hurwitz Memorial Philanthropic Fund

Marilyn A. Katz Philanthropic Fund in memory of Jay Katz

Louis and Beatrice Kaye Foundation Philanthropic Fund

Kinstlinger-Feist Family Fund

Edward Konowitz Family Philanthropic Fund

Julie Kovar Fund

Kenneth and Robin Kramer Family Fund

Sherman and Sara Kramer Family Philanthropic Fund

Sherman and Evelyn Krevolin Family Fund

Arthur and Betty Levy Family Fund

John and Beverly Levy Fund

Major Feuerstein Family Fund

Pearl Mantell Fund

Saul and Sandra Milles Family Fund

Leo and Libby Nevas Collaboration Grant Fund

Jeanette and Dan Oren Family Fund*

Daniel and Lisa Price Philanthropic Fund

Jo-Ann N. and Michael P. Price Family Fund

Ronald and Pamela Reis Philanthropic Fund

Howard J. Reiter and Jody P. Ellant Foundation Philanthropic Fund

Marcia and Stanley F. Reiter Philanthropic Fund

Jean and Erik Rosenthal Philanthropic Fund*

Kenneth Rosenthal and Catherine Forman Philanthropic Fund

Joyce and Kopi Saltman Philanthropic Fund

Stephen and Marilyn Saltzman Philanthropic Fund

Anita Saxe Memorial Charitable Fund

Schaefer-Lawall Family Fund*

Edwin and Lorrie Schaefer Family Fund

Herbert Setlow Family Fund

Marcie and Carolyn Setlow Family Philanthropic Fund

Arnold and Arlene Shanbrom Philanthropic Fund

Lawrence and Sherry Shanbrom Fund

Nathan M. Silverstein Family Charitable Fund

Nanci and Craig Sklar Family Fund*

Sklarz Family Philanthropic Fund

Skolnick Family Fund

Rosalyn and Kenneth Sperling Family Foundation

Barry and Hyla Vine Family Fund

Vlock Grandchildren Tzedakah Fund

William and Florence Wallack Family Philanthropic Fund

The Wolpert Family Fund in memory of Renee Levy

**CREATE A LEGACY
FOR WHAT IS
IMPORTANT
TO YOU**

/ DESIGNATED ENDOWMENT FUNDS /

Includes:

1. Designated restricted funds,
 2. Designated custodial/ agency-owned funds,
 3. Field of interest philanthropic/donor advised funds, and
 4. Designated charitable trusts and annuities
- + Fund benefitting more than one organization is listed in multiple categories

* New Fund 2017

**CREATE A LEGACY
FOR WHAT IS
IMPORTANT
TO YOU**

Funds to Support the Jewish Federation of Greater New Haven

Jewish Federation of Greater New Haven
Philanthropic Fund

For funds to support the Jewish Federation of GNH annual campaign, see PACE Funds (page 30)

Funds to Support the Jewish Community Relations Council and the Jewish Coalition for Literacy

Friends of the JCL Endowment Fund

The Carol Sirot Fund for the benefit of the Jewish Community Relations Council in memory of Dr. Gustav Sirot

Funds to Support the Jewish Community Center of Greater New Haven

Funds to Support the JCC Day Camp are listed separately under Funds for Jewish Camping

Beckerman Family Supporting Foundation, Inc.
Jewish Community Center Endowment Fund

Abby & Harold Bench Fund for the benefit of the Jewish Community Center

Kenneth and Linda Cohen Family Endowment for the JCC Swimming Pool

Arthur & Yvette Eder Fund for the benefit of the Jewish Community Center

Jack Evans Fund for the benefit of the JCC, in memory of Al Evans

Rose and John Fox Memorial Fund for the benefit of the Jewish Community Center

Ian Freeman Life Insurance Policy for the benefit of the Jewish Community Center

Rose B. and Barbara Gingold Fund +

Velma and Stuart Grodd Endowment for the benefit of the JCC

Hahn Silberberg Fund for the benefit of the Hahn Shelling Playground at the JCC*

Jewish Community Center Board Endowment for the benefit of the JCC

Jewish Community Center Community One Event Fund

Lydia D. Levine Fund for the benefit of Congregation Mishkan Israel and the JCC +

Leo Links Fund for the benefit of the Jewish Community Center

Moses M. and Hannah Malkin Charitable Gift Annuity + Phillip & Ann L. Meyerson Fund for the benefit of the Jewish Community Center

Dorothy Shure Memorial Fund for the benefit of the Jewish Community Center

Teplitzky Family Endowment for the benefit of the JCC

Funds to Support Athletics and Youth Fitness at the JCC

Harold "Bub" Hahn Endowment for Athletics at the Jewish Community Center

Lenny Margolis Athletic Endowment Fund

Martha Sue and Betrand S. Weisbart Endowment Fund for the benefit of Youth Fitness at the JCC of GNH

Funds to Support Music, Cultural Arts, and Educational Programs at the JCC

Fredrick A. and Justine Millspaugh Catlin Family Foundation Endowment Fund for the benefit of the JCC

Edward Cooley Fund for Musical Programs at the Jewish Community Center

Dr. Milton Godfried for the Jewish Community Center Cultural Programs in memory of his loving wife, Gladys

Stuart Harris Fund for Cultural Arts at the Jewish Community Center

Francis Shield Fund for the Jewish Community
Center Healthy Women Healthy Lives Program
Francis Shield Fund for the Jewish Community
Center Cultural Arts Program

Funds to Support the Jewish Elderly

Harry Braffman in memory of his mother,
Fannie Braffman Fund
Benjamin & Freda Cohen Memorial Fund for
Jewish Programs for the Frail and Elderly
Community Endowment Fund for the
Jewish Elderly
Fund to Support the Jewish Home for the
Elderly, Fairfield
Eva Kahn Fund for Elderly Services
Marion G. Litsky Fund
Isaac S. & Mary G. Liveten Memorial Fund
Irvin Shiner 75th Birthday Fund
Paul and Sylvia Sweedler Charitable Gift Annuity
Donald A. Berkowitz Memorial Fund +

FUNDS TO SUPPORT THOSE IN NEED

Funds to Support Jewish Family Service of Greater New Haven

Lucille & Arnold Alderman Fund +
Phyllis Bausher Charitable Gift Annuity
(for the benefit of Jewish Family Service and
Congregation Mishkan Israel)
Benjamin & Freda Cohen Memorial Fund for
Jewish Family Service
Betty A. Ellis Memorial Fund for the
benefit of Jewish Family Service
Oscar & Irma Hamburger Memorial Fund for the
benefit of Jewish Family Service
Peter C. Hereld Memorial JFS "Families in
Crisis" Endowment

Star of David Society

The Star of David Society is a national program of the Jewish Federations of North America that honors outstanding philanthropists who have created a PACE or LOJE gift (an endowment fund that perpetuates a federation donor's annual campaign gift) of \$200,000, and/or other permanent endowments of \$500,000 or more with their local Jewish Foundation. New Haven Star of David Society members are:

Lucille and Arnold Alderman
Ruthann and David A. Beckerman
Harvey Bixon*
Benjamin and Freda Cohen z'l
Irving Eckhardt z'l
Sidney and Arthur Eder z'l
Yvette and Arthur Eder z'l
Rose Gingold Charitable Trust

Jewish Family Service Community One Event Fund
Jewish Family Service Endowment Fund
Moses M. and Hannah Malkin Charitable
Gift Annuity +
Samuel and Rose Merriam Fund (for the benefit of
Congregation B'nai Jacob, Orchard Street Shul,
Jewish Family Service, the Jewish Federation of
GNH, ADL, and the Jewish Cemetery Association
of GNH)
Mark & Heni Schwartz Family Fund for Jewish
Family Service, Westville Synagogue, and
Jewish Education+
Teplitzky Family Fund for the benefit of Jewish
Family Service
Herbert B. and Lillian Wolfson 2005 Charitable
Lead Trust +

Other Funds to Help Those in Need

Henry and Marion Bixon Fund +
Clifford Beers Clinic Fund to Support Victims
of Trauma

Gladys and Milton Godfried z'l
Estate of Irma Hamburger
Betsy S. Hoos
Jeffrey Hoos
Marcia Reiter
Estate of Hannah and David Surasky
Barry and Hyla Vine
Seymour Yudkin z'l

Benjamin & Freda Cohen Memorial Fund for Jewish
Programs for the Frail and Elderly
Devorah Fund for Children with Medical Needs
Dodie Crane Memorial Fund to Help Children in Need
Robert R. and Anita B. Eisner Fund for Women
and Children
Betty Freedman Charitable Gift Annuities
Janet F. Gans Charitable Gift Annuities
The Jacob Fund
Maimonides Fund
Francis Shield Fund +
Norman K. and Elaine S. Silverman Charitable Gift
Annuity in memory of Louis Silverman, Sophia
Silverman, Morris Straka, Tessie Straka, and
J. William Silverman

FUNDS TO SUPPORT TOWER ONE/ TOWER EAST

Beckerman Family Fund for the benefit of
Towers Foundation, Inc.
Ruth Shiffrin Blum Family Fund
Transportation for Towers Residents

/ DESIGNATED ENDOWMENT FUNDS, CONT. /

Adele Edelmuth Memorial Fund for residents with Cognitive Impairment at Tower One/Tower East
Jack Evans Fund for the benefit of the Towers Foundation, Inc.
Dorothy Giannini-Meyers Tower One/Tower East Philanthropic Fund
Dorothy Giannini-Meyers Fund for the benefit of the Towers
Dr. Milton & Gladys Godfried Endowment Fund for the benefit of Tower One/Tower East Health Center
Dr. Milton and Gladys Godfried Endowment Fund for the benefit of Tower One/Tower East
Gladys Godfried Memorial Garden Fund at Tower One/Tower East endowed by her husband, Dr. Milton Godfried
Gordon Family Fund for the benefit of the Towers*
Eva Kahn Endowment for the Towers Foundation, Inc.
Barbara H. Katz Fund for Assistance to Resident Support Services at Tower One/Tower East
Koral Family Fund for the Benefit of the Towers*
Zelda Kroogman Fund for the benefit of the Towers Foundation, Inc.
Cecile Spector Charitable Gift Annuity
Towers 50th Anniversary Endowment Fund*
Tower One/Tower East Community One Event Fund
Tower One/Tower East Endowment Fund
Towers Endowment in Honor of Evelyn Siegal*
Tower One Tower East Philanthropic Fund
Towers' Residents Fund in Honor of Barry and Hyla Vine*
Hyla and Barry Vine Family Endowment for the Towers*
Towers Endowment in Honor of Fran Wallnau*

* New Fund 2017

**CREATE A LEGACY
FOR WHAT IS
IMPORTANT
TO YOU**

FUNDS TO SUPPORT JEWISH EDUCATION AND THE CENTER FOR JEWISH LIFE AND LEARNING (CJLL FORMERLY DJE)

Beckerman Family Supporting Foundation Endowment Fund for the benefit of the Department of Jewish Education
Ceal B. Berson Fund for Community Jewish Education
Abraham Bettigole Fund for Jewish Education
Ida Bettigole Fund for Jewish Education
Bernard & Bella Braverman Charitable Gift Annuities to benefit the Children's Library at the JCC
Benjamin & Freda Cohen Memorial Fund for DJE
Community Education Fund
Dr. Milton & Gladys Godfried Endowment Fund for the Children's Library at the Jewish Community Center
Sidney Gross Educational Fund
Henry and Helen Kasha Fund for the Teaching of the Hebrew Language
Judith A. Kaye Fund for Improving Jewish Education Through Teacher Training
Charlotte W. and Donald L. Perlroth Scholarship Fund for Jewish Education
Sydney and Tony Perry Fund for the Department of Jewish Education in memory of Arnold Alderman
Dr. Brigitte Prusoff Endowment Fund for the Department of Jewish Education
"Taste of Honey" Program
William H. Prusoff Education Fund
Marcia & Stanley F. Reiter Fund for Jewish Education
Eugene Schaffer Memorial Fund for Support of Panim el Panim, the Jewish Civics Initiative for Youth, established by Gloria Schaffer
Mark & Heni Schwartz Family Fund for Jewish Family Service, Westville Synagogue, and Jewish Education* +

Bessie Jacob Shafer Fund for the CJLL Library
at the JCC

Richard & Judith Hahn Shelling Scholarship
Fund for Jewish Education

Freida Shure Memorial Award Fund

Fund to Support Holocaust Education

Murray & Marvin Lender Holocaust Education Fund

Funds to Support MAKOM

Selma & Gustav Strauss Memorial Fund for MAKOM,
established by their daughter & grandson, Karoline
Strauss Horowitz & Robert H. Horowitz

Funds to Support Special Needs Education

David Kaplan Memorial Fund for the Jewish
Education of Children with
Special Needs, established by his daughter &
son-in-law, Mildred & Arnold Mangen

Esther Krevit and Andrea Krevit Ross Fund for the
benefit of Special Needs Children

Shirley and Irving Kroopnick Fund for the benefit
of Talmud Torah Meyuchad, the New Haven
Jewish Educational Program for Children with
Special Needs

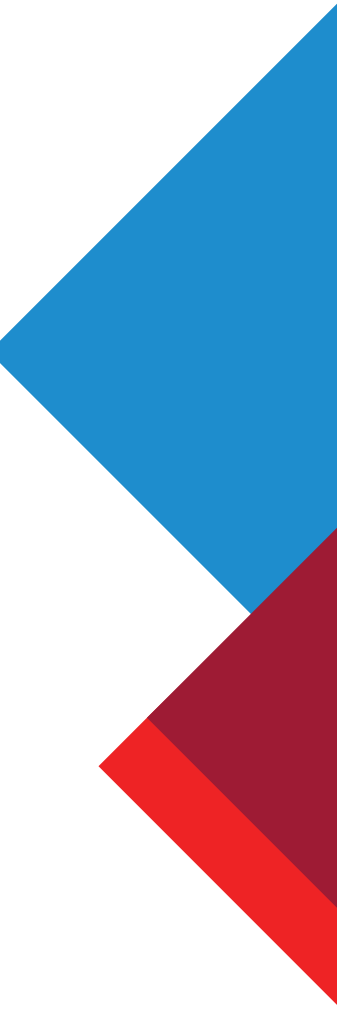
Esther S. and David A. Lipman Fund for Jewish
Education (for special education)

Marion, Harold and Barry Schwartz Fund for Children
with Special Needs

Milton & Beatrice Smirnoff Fund for Children with
Special Needs

Special Needs Education Fund

*Funds for Youth Education Programs in Israel are
listed separately under "Funds to Support Israel"*



As part of its Build a Tzedakah program, the Jewish Foundation of Greater New Haven held a Pop-up Jewish teen giving circle. The teens, part of the JTE (Jewish Teen Education) program, invited local organizations to present concerning funding needs. The program included discussion of philanthropic values, why people give, and how to give. The Jewish Foundation provided monies to the teens for their allocation process. The teens awarded the following grants:

- IRIS (Integrated Refugee & Immigrant Services) for a teen civil rights travel program this summer.
- Jewish Family Service of Greater New Haven for its Stars of David program providing post-adoption social support to adopted Jewish teens.
- JCC of Greater New Haven for its Makerspace.

Funds to Support March of the Living

Judith & Eldon Bernstein Fund for March of the Living
Congregation Kol Ami March of the Living Fund

The Kinstlinger, Feist, Lichtblau & Strauss Fund for the
March of the Living established by Danielle &
Robert Kinstlinger in memory of their grandparents,
aunts & cousins who perished in the Holocaust

Ravski Family Fund in memory of Perla, Jerry & Ruth
Ravski and in Honor of Philip Ravski to benefit
March of the Living Scholarships

Leon & Lillian Weinberg Fund for Support of the
March of the Living

In Memory of Martha Wolfes and the Family of

Otto Wolfes who perished in the Holocaust
established by Alice and Peter Hereld
Selma L. and Harold Yudkin Fund for the March
of the Living

Michael & Shifra Zamkov Fund for the March of the
Living in memory of our parents, Aryeh Leib & Basya
Chevlin and Shlomo Yaakov & Rivka Zamkov

Other Funds to Support Education

Lucille & Arnold Alderman Fund for
the Iyvmount School

Beckerman Family Supporting
Foundation Endowment Fund for the benefit
of the University of New Haven

/ DESIGNATED ENDOWMENT FUNDS, CONT. /

“One person can make a major impact on the world around them. You too can become a light for our community. Let your name be remembered as a blessing.”

* New Fund 2017

**CREATE A LEGACY
FOR WHAT IS
IMPORTANT
TO YOU**

Beckerman Family Supporting Foundation Endowment Fund for the benefit of Hamden Hall Country Day School
Donald A. Berkowitz Memorial Fund (to benefit the University of Michigan) +
Rose B. and Barbara Gingold Fund (to benefit Brandeis University and Albert Einstein College of Medicine) +
Marion Ullman Weinstein Scholarship Fund for Brandeis University

FUNDS TO SUPPORT DAY SCHOOLS

Funds to Support Ezra Academy

Elaine & Richard Ades Endowment for the Arts at Ezra Academy
Lucille and Arnold Alderman Fund for Ezra Academy
Beth Ann Beller Fund for Nutrition Education at Ezra Academy
Rose and Abraham Cohen Endowment Fund for Sephardic Educational Materials at Ezra Academy
Johathan Adam Cooper Memorial Sports Fund for the benefit of Ezra Academy
Johnathan Cooper Memorial Scholarship Endowment Fund
Joan Edelstein Davenny Memorial Fund to enable Ezra Academy students to participate in Israel programs
Ezra Academy Community One Event Fund
Joan Edelstein Davenny Memorial Fund to enable Ezra Academy students to participate in Israel programs
Ezra Academy Community One Event Fund
Ezra Academy Endowment Fund
Ezra Academy Israel Trip Endowment Fund
Ezra Academy Scholarship Fund in memory of Isaac Goldberg

Feldman Family Fund for the benefit of Ezra Academy, the Jewish High School of Connecticut and Congregation Beth-El +
Waynik-Larrison Gaisman Family Fund for the benefit of Ezra Academy
Samuel & Marcella Glazer Fund for Ezra Academy
Bess & Herman Glazer Bequest Fund for Ezra Academy
Sam & Marcella Glazer Fund for the benefit of Ezra Academy
Morton Goldberg Ezra Academy Endowment Fund
Malka Levine Memorial Teacher Education Fund for the benefit of Ezra Academy
Jechiel Mostow Scholarship for the Ezra Academy 8th-grade Program in Israel Endowment Fund
George G. & Leah E. Posener Elementary School at Ezra Academy Endowment Fund
George G. & Leah E. Posener Scholarship Fund for the benefit of Ezra Academy
Barry David Reznik Chemistry Fund for Ezra Academy
Reiter Ellant Fund for Ezra Academy*
Claire Robbins Memorial Scholarship Fund for the benefit of Ezra Academy
Francis Shield Fund +
Rose and Hy Slifer Ezra Academy Israel Trip Fund in Honor of Judy Cooper
Shirley and Morris Trachten Fund for Jewish Education +
Beverly Zerwitz Zlotoff Scholarship Fund for the benefit of Ezra Academy

Funds to Support Southern Connecticut Hebrew Academy (New Haven Hebrew Day School)

Beckerman Family Supporting Foundation, Inc. Endowment and Education Fund for the New Haven Hebrew Day School

Henry & Marion Bixon Fund +
Ruth and Jerome Gross Memorial Fund
Komisar Family Fund +
New Haven Hebrew Day School Endowment Fund
New Haven Hebrew Day School Education Fund
New Haven Hebrew Day School
Community One Fund
New Haven Hebrew Day School
Community One Event Fund
George G. & Leah E. Posener Scholarship Fund for
the benefit of the New Haven Hebrew Day School
Elementary Students in Blessed Memory of Rabbi
Maurice Hecht
Stanley F. and Marcia Reiter Philanthropic Fund for
New Haven Hebrew Day School
Shirley and Morris Trachten Fund for
Jewish Education +

Funds to Support the Jewish High School of Connecticut

Lucille and Arnold Alderman Fund for Scholarships for
the Jewish High School of Connecticut
Feldman Family Fund for the benefit of Ezra
Academy, the Jewish High School of Connecticut
and Congregation Beth-El +

Funds to Support The Hebrew High School of New England

Benjamin & Freda Cohen Memorial Fund for Hebrew
High School of New England
Vivian & Nathan Fink Scholarship Fund for the
Hebrew High School of New England
Hebrew High School of New Haven

Other Funds to Support Day Schools

Ida Orlin Fallman, Sophie Sylvia Orlin and Edith Orlin
Jacobs Fund (to support the Solomon Schechter
School, Newton, Mass.)

Komisar Family Fund (to benefit American Friends of
Yeshiva D'mir, Torah Umesorah, Ezrat Torah, and
Yeshivat Torah Vodath) +

FUNDS TO SUPPORT SYNAGOGUES

Funds to Support Congregation Beth-El, Fairfield

Feldman Family Fund for the benefit of Ezra
Academy, the Jewish High School of Connecticut,
and Congregation Beth-El +

Funds to Support Congregation Beth El-Keser Israel, New Haven

Beth El-Keser Israel Cemetery Association Fund
Saul & Hope Bell Memorial Fund for
Congregation BEKI*
Eric I.B. Beller Environment Endowment Fund
for the benefit of Congregation BEKI
The Borick Family Endowment for Special Education
for Youth at BEKI
Congregation Beth El-Keser Israel Religious School
Endowment Fund
Diana Friedman Opton Fund for the benefit of BEKI
Goodwin Brothers Memorial Fund for the benefit of
Beth El-Keser Israel
Oscar & Irma Hamburger Memorial
Endowment Fund for Congregation BEKI
Tillie Dworski Horwitz & Edward Horwitz Endowment
Fund for the benefit of BEKI
The Legacy L'chayim Fund for Congregation BEKI
Ari Nathan Levine Memorial Fund for the Continuity
of Congregation BEKI, established by his parents,
Donna and Sidney Levine
Bessie & Max Levine Children's Book Fund for
Congregation BEKI
David & Lillian Levine Endowment for People with
Special Needs at Congregation BEKI
Rabbi Murray Levine Charitable Gift Annuities

Ben & Ruth Marks Fund for BEKI
Gladys R. Lipkin Fund for the
Congregation BEKI Hebrew School
Lester E. & Bernice L. Margolis Fund for the
benefit of BEKI
Marvin Missan Fund for Congregation BEKI
Morris & Sara Oppenheim Fund for Sacred Music
at BEKI
The Posener Family Memorial Fund for Congregation
Beth El-Keser Israel, established by George G.
Posener in blessed memory of his wife, parents,
four sisters, brother, and two precious sons
George G. & Leah E. Posener Memorial Fund +
George G. & Leah E. Posener Endowment Fund for
the Jewish Education of Beth El-Keser Israel Youth
Leah E. Posener & Betty D. Zelen Memorial Fund for
the benefit of Congregation Beth El-Keser Israel
Sisterhood, established by George G. Posener
George G. Posener Family Memorial Yom Kippur
Breakfast Fund at Congregation Beth El-Keser Israel,
established by George G. Posener in blessed
memory of his wife, parents, four sisters, brother,
and two precious sons
George G. Posener Kadima and United Synagogue
Youth Fund
Rosenkrantz Family Library Endowment Fund for
the benefit of BEKI
Irving Simon Fund for BEKI
Batsheva Labowe-Stoll Fund for the
Support of Jewish Life at BEKI
Gilah Benson-Tilsen Fund for Youth at
Congregation BEKI
The Noam Benson-Tilsen Fund for BEKI Kids at
Camp Ramah*
Tova Benson-Tilsen Fund for Animal Welfare at
BEKI and in Israel

/ DESIGNATED ENDOWMENT FUNDS, CONT. /

Funds to Support Congregation B'nai Jacob, Woodbridge

Lucille and Arnold Alderman Fund for the benefit of Congregation B'nai Jacob
Astrove Family Endowment Fund in Memory of Sherwin B. Nuland
Marjorie and Norman Botwinik Fund
Congregation B'nai Jacob Endowment Fund
Rose and John Fox Memorial Fund for the benefit of Congregation B'nai Jacob
Roslyn Lerner Fund in memory of Howard Lerner for the benefit of Congregation B'nai Jacob
Samuel and Rose Merriam Fund (for the benefit of Congregation B'nai Jacob, Orchard Street Shul, Jewish Family Service, the Jewish Federation of GNH, ADL, and the Jewish Cemetery Association of GNH) +
James M. & Patricia Shure Fund for the benefit of Congregation B'nai Jacob
Fried-Watsky Tikkun Olam Fund for the benefit of Congregation B'nai Jacob

Funds to Support Congregation Beth Shalom Rodfe Zedek, Chester

Breitman Education Fund for Congregation Beth Shalom Rodfe Zedek
Congregation Beth Shalom Rodfe Zedek Capital Fund
Congregation Beth Shalom Rodfe Zedek Cemetery Endowment Fund
Congregation Beth Shalom Rodfe Zedek Endowment Fund
Ira B. Fink Deferred Charitable Gift Annuity
Fink Family Fund for the benefit of Congregation Beth Shalom Rodfe Zedek
Karen Horowitz Deferred Charitable Gift Annuity
Jewish Federation Endowment Fund for the benefit of

Congregation Beth Shalom Rodfe Zedek
Sheldon Kutnick Visiting Scholar Fund for Congregation Beth Shalom Rodfe Zedek

Funds to Support Congregation Mishkan Israel, Hamden

Phyllis Bausher Charitable Gift Annuity (for the benefit of Jewish Family Service and Congregation Mishkan Israel)
Beckerman Family Supporting Foundation Endowment Fund for the benefit of Congregation Mishkan Israel
Donald A. Berkowitz Memorial Fund +
Herbert Brockman Rabbinic Endowment Fund
Congregation Mishkan Israel Endowment Fund
Arthur & Yvette Eder Fund for the benefit of Congregation Mishkan Israel
Rose B. and Barbara Gingold Fund +
Stephen & Sally Glick Fund for the benefit of Congregation Mishkan Israel
Nathan and Hilda Kaminsky Mishkan Israel Religious School Scholarship Fund
Robert N. & Goldythe B. Langerman Inter-marriage Fund at Mishkan Israel
Lydia D. Levine Fund for the benefit of Congregation Mishkan Israel and the Jewish Community Center +
Postman Memorial Fund
Norman and Harriet Rashba Charitable Gift Annuity +
Gale & Michael Silverberg fund for the benefit of the Rabbi's Endowment Fund at Congregation Mishkan Israel
Sklarz Family Fund for the benefit of the Rabbi's Endowment Fund at Congregation Mishkan Israel
Weisbart Family Fund for the benefit of Congregation Mishkan Israel

* New Fund 2017

**CREATE A LEGACY
FOR WHAT IS
IMPORTANT
TO YOU**

[Funds to Support Congregation Or Shalom, Orange](#)

Bloch Family Fund for Support of Israel Travel by Congregation Or Shalom Youth +

Jack Evans Fund for the benefit of the Rabbi Alvin Wainhaus Discretionary Fund at Congregation Or Shalom

Marion G. Litsky Fund for the benefit of Congregation Or Shalom

Congregation Or Shalom Endowment Fund

[Funds to Support Orchard Street Shul, New Haven](#)

Orchard Street Shul Endowment

Samuel and Rose Merriam Fund (for the benefit of Congregation B'nai Jacob, Orchard Street Shul, Jewish Family Service, the Jewish Federation of GNH, ADL, and the Jewish Cemetery Association of GNH)

[Funds to Support Temple Beth David, Cheshire](#)

Falit Family Fund in Honor of Bar Mitzvah of Joseph E. Falit for Scholarships for Temple Beth David Youth

Temple Beth David Endowment Fund

Temple Beth David Jaffe Capital Construction Endowment

Temple Beth David Philanthropic Fund

Temple Beth David Holocaust Memorial Fund

Temple Beth David Memorial Fund

Temple Beth David Sommers Fund

Temple Beth David Vallone Youth Fund

[Fund to Support Temple Beth Tikvah, Madison](#)

Glick Family Fund for the benefit of Temple Beth Tikvah

Wendy Gross Endowment Fund for Temple Beth Tikvah*

Temple Beth Tikvah Cemetery Fund*

Temple Beth Tikvah Endowment Fund

[Fund to Support Beth Israel Synagogue \(Wallingford\)](#)

Beth Israel Synagogue (Wallingford) Endowment Fund for Development

[Funds to Support Temple Emanuel](#)

Temple Emanuel Endowment

Temple Emanuel Leave A Legacy Fund*

[Funds to Support Westville Synagogue, New Haven](#)

Jay Katz Memorial Fund for the benefit of Westville Synagogue

Marcia & Stanley F. Reiter Fund for Westville Synagogue

Mark & Heni Schwartz Family Fund for Jewish Family Service, Westville

Synagogue, and Jewish Education* +

Westville Synagogue Endowment Fund*

[Funds to Support Young Israel of New Haven](#)

Benjamin & Freda Cohen Memorial Fund for Young Israel of New Haven

Komisar Family Fund

FUNDS TO SUPPORT JEWISH CAMPING

[Funds to Support Camp Laurelwood](#)

Lucille and Arnold Alderman Camp Fund +

Beckerman Family Supporting Foundation Camping Experience Endowment Fund for the benefit of

Camp Laurelwood, JCC Day Camp and Fresh Air Fund +

Dr. Milton Godfried Camp Laurelwood Health Service Fund in memory of his loving wife, Gladys

Dr. Milton Godfried Fund for Camp Laurelwood Scholarships Fund in memory of his loving wife, Gladys

Richard D. & Roberta D. Grossman Camp Laurelwood Scholarship Endowment

Bertha Konowitz Scholarship Fund for Camp Laurelwood

Robert N. & Goldythe B. Langerman Fund for Camp Laurelwood Scholarships

Camp Laurelwood Community One Event Fund

Camp Laurelwood Endowment Fund

Lester E. & Bernice L. Margolis Fund for the benefit of Camp Laurelwood

Michael Shiner Endowment Fund in memory of the benefit of Camp Laurelwood

Herbert B. and Lillian Wolfson 2005 Charitable Lead Trust +

[Funds to Support the JCC Day Camp](#)

Lucille and Arnold Alderman Camp Fund +

Beckerman Family Supporting Foundation Camping Experience Endowment Fund for the benefit of

Camp Laurelwood, JCC Day Camp and Fresh Air Fund +

Irma K. & Alvin L. Evans Jewish Community Center Camp Scholarship Fund

Peter C. Hereld Memorial Endowment for the JCC Camp

Hyla and Barry Vine Fund for JCC Camp

[Fund to Support Camp Gan Israel at New Haven Hebrew Day School](#)

Lucille and Arnold Alderman Camp Fund +

[Fund to Support Camp Ramah](#)

George G. & Leah E. Posener Fund for Tikvah Program for Special Education Needs at Camp Ramah

[Funds to Support the New Haven Register Fresh Air Fund Camp](#)

Lucille and Arnold Alderman Camp Fund +

/ DESIGNATED ENDOWMENT FUNDS, CONT. /

Beckerman Family Supporting Foundation Camping Experience Endowment Fund for the benefit of Camp Laurelwood, JCC Day Camp and Fresh Air Fund +

Funds to Support The Jewish Historical Society of Greater New Haven

Jewish Historical Society of Greater New Haven Endowment Fund, established by Distinguished Members of the Jewish Historical Society; Lucille Alderman; Herbert D. Setlow; Dr. Barry F. Herman in memory of Louis and Helen Herman and Lawrence S. Hirsch

Jewish Historical Society Philanthropic Fund
George G. and Leah E. Posener Memorial Fund +

Funds to Support Jewish Cemeteries

Auxiliary of the Jewish Home for the Aged Endowment for the benefit of the Jewish Cemetery Association

Beth El-Keser Israel Cemetery Association Fund
Hebrew Burial & Free Loan Association of Greater New Haven Fund

Lucille & Arnold Alderman Fund for the benefit of the Jewish Cemetery Association of Greater New Haven
Jewish Cemetery Association of Greater New Haven Endowment Fund

Zelda Kroogman Fund for the benefit of the Jewish Cemetery Association of Greater New Haven
Samuel and Rose Merriam Fund (for the benefit of Congregation B'nai Jacob, Orchard Street Shul, Jewish Family Service, the Jewish Federation of GNH, ADL, and the Jewish Cemetery Association of GNH) +

New Haven Beth Israel Cemetery Association Fund
Saltzman Family Fund for the benefit of the Jewish Cemetery Association of Greater New Haven
James M. Shure Family Endowment for the Jewish Cemetery Association of Greater New Haven

Workmen's Circle Branch #10 Endowment Fund

Fund to Support Hebrew Loan Association

Hebrew Burial and Free Loan Association Fund

Fund to Support New Haven Beth Israel (Orchard Street Shul) Cemetery

New Haven Beth Israel Cemetery Association Fund

Funds to Support the ADL

Lucille and Arnold Alderman Fund for the benefit of the ADL

Beckerman Family Endowment Fund for the benefit of the Connecticut Anti-Defamation League

Sidney & Arthur Eder Fund for the benefit of the Connecticut Anti-Defamation League

Samuel and Rose Merriam Fund (for the benefit of Congregation B'nai Jacob, Orchard Street Shul, Jewish Family Service, the Jewish Federation of GNH, ADL, and the Jewish Cemetery Association of GNH) +

Stephen L. Saltzman Fund for the support of the ADL Holocaust Education Program

Funds to Support the Arts

Cecle Adler Music Scholarship Fund

Beckerman Family Endowment for the Shubert Theater

Emily Fine & Stephen Stein Fund for Musical Enrichment in the Jewish Community in memory of Irving Fine

Sidney and Arthur Eder Fund for the benefit of the Arts Council of Greater New Haven

Funds to Support the Arts at Local Jewish Agencies and Synagogues are listed under those organizations

Funds to Support the Boy Scouts

Lucille & Arnold Alderman Fund +

* New Fund 2017

**CREATE A LEGACY
FOR WHAT IS
IMPORTANT
TO YOU**

David Silver Family Fund for support of Boy Scouts of America

Troop #41 Boy Scouts of America Fund

Funds to Support the United Way

Donald A. Berkowitz Memorial Fund +

Komisar Family Fund +

Funds to Support Medical Research and Hospitals in the United States

Lucille and Arnold Alderman Fund (to benefit The Leukemia & Lymphoma Society of America Hospital of St. Raphael fbo of Father Michael J. McGivney Center for Cancer Care, and Yale New Haven Hospital for the benefit of Pediatric Hematology)

Lucille and Arnold Alderman Fund for the benefit of Sister Ann Virginie Grimes Health Center at St. Raphael's Hospital

Henry and Marion Bixon Fund (to support Children's Hospital—Yale New Haven Hospital)

Funds to Support Community Awards

Murray Gallant Memorial Scholarship Fund for Professional Development

Sydney A. Perry Fund for Jewish Learning and Leadership

Robert R. Eisner Award Fund

Yitzhak Rabin Fund for Peace and Human Relations

Other Funds

Lucille and Arnold Alderman Fund (to benefit the The World Wildlife Fund, The Wildlife Conservation Society, and the Peabody Museum of Natural History at Yale University) +

Lucille and Arnold Alderman Fund for the benefit of the Auschwitz Jewish Center

Lucille and Arnold Alderman Fund for the benefit of Clifford Beers Clinic

Lucille and Arnold Alderman Fund for the benefit of LEAP

Lucille and Arnold Alderman Fund for Planned Parenthood

Daughters of 1853 Nursing Scholarship Fund
Sidney and Arthur Eder Fund for the benefit of Juvenile Diabetes Research Fund International

Eva Gronner Fund for the benefit of the U.S. Holocaust Memorial Museum

Komisar Family Fund (to benefit Union of Orthodox Congregations and Kosher Kitchen at Yale University) +

Hinda and Alan Massey Mitzvah Fund

George G. and Leah E. Posener Memorial Fund (to benefit Yale NHH, Connecticut Freemasons Foundation, Milford Hospital, and Temple Beth El)

Herbert Setlow Fund for the benefit of B'nai B'rith Housing

Seymour Yudkin Fund for the Int'l Rescue Committee

Marian Fox Wexler Charitable Gift Annuity to support Hadassah

Funds to Support Israel

The Israel Endowment Fund

Earl & Muriel Banquer Israel Endowment Fund*

Funds to Support Youth Programs and Travel in Israel

Birthright Israel Endowment Fund

Bloch Family Fund for Support of Israel Travel by Congregation Or Shalom Youth +

Department of Jewish Education TIES Program Fund

Esther Gold Milikowsky-Copelon Fund in memory of Matthew Milikowsky for Teen Travel to Israel

Marvin S. Pisetsky Israel Scholarship Endowment Fund

Arthur Spiegel Israel Scholarship Fund

Lawrence & Florence Winer Israel Scholarship Fund

Funds to Support Scholarships

Stuart J. Drell Scholarship Fund

Emma Kohn Podoloff Scholarship of the GNH Section of the National Council of Jewish Women

Funds to Support Israeli Organizations

Rose B. and Barbara Gingold Fund (to benefit the American Friends of the Weizmann Institute of Science, the American Friends of the Technion Institute, and the American Friends of Hebrew University) +

Henry and Marion Bixon Fund (to benefit Hadassah Medical Organization) +

Edna Zusman & Zelda Kroogman Fund for American Friends of the Weizmann Institute of Science

Tova Benson-Tilsen Fund for Animal Welfare at BEKI and in Israel +

Shirley & Morris Trachten Fund for the Medical Research +

Fund to Support UConn Hillel

UConn Hillel Endowment Fund

/ UNRESTRICTED FUNDS /

“Whoever practices charity and justice fills
the world with loving kindness.”

— B Talmud Sukkah 49B

* New Fund 2017

**CREATE A LEGACY
FOR WHAT IS
IMPORTANT
TO YOU**

Ades Family Fund
Doris Alpert Memorial Fund
Alpha Omega Dental Society Fund
Gertrude Amidai Fund
Anonymous
Ruthann Beckerman Special Birthday Fund
Stanley and Lillian Bergman Fund
Stanley Berwald Fund
Betty Lou and Joseph Blumberg
50th Anniversary Fund
Dr. Edward J. and Adele C. Blumenthal Fund
Marjorie and Norman Botwinik Fund
Jerry Braun Memorial Fund
Bernard and Bella Braverman Fund
Bernard Brody Memorial Fund
Milton I. and Patricia S. Caplan Unrestricted Fund
Ruth Caplan Special Birthday Fund
Catlin Foundation
Benjamin & Freda Cohen Memorial Fund for the
Jewish Foundation of GNH
In Memory of Steven L. Cohen by his parents,
Jack D. and Miriam C. Cohen
Pearl and Donald Cohen Fund
Rose R. Cohen Memorial Fund
Richard Cooper Fund in Honor of his 60th birthday
Coradino Holocaust Fund
The Susan Dorfman Fund in Honor of her recovery
Ethel Eckhardt Fund
The Eckhardt Family Fund in Memory of Nathan and
Ida Eckhardt
The Harvey Eckhardt Family Fund in Memory of
Ann and Samuel Eckhardt
Arthur and Yvette Eder Endowment Fund
Marvin Eisenberg Memorial Fund
Audrey Eisenstadt Memorial Fund
Betty A. Ellis Memorial Fund

The Fearer Family Fund
The Carl and Joyce Feen Family Fund
John and Rose Fox Memorial Fund
Lewis L. and Elaine L. Friedland Fund
Blanche Friedman Memorial Fund
In Memory of Murray Gallant
Suzanne and Murray Gallant Simcha Fund
Bane and Bertha Gallin Fund
Lillian Gandelman Endowment Fund
Herbert I. Geisinger Fund
Carl Gesund Memorial Fund
Rose Gingold Memorial Fund
In Memory of George A.
and Mattie L. Ginsburg
Herman and Bessie G. Glazer Fund
Dr. Morris Glazer Memorial Fund
Lindy Lee Gold Fund
Rita Greenberg Gold Birthday Fund
Florence Bandler Goodman
Memorial Fund
Paul and Claire Goodwin Fund
Carole and Harold Greenbaum
Family Fund
Alvin Greenberg Fund
Barbara Greenberg Special
Birthday Fund
Mildred and George Groobert Fund
Elizabeth Hamburger Memorial Fund
Rita and Herbert Hershenson Fund
Hoos Family Fund
Doris & Paul Isacoff Fund
Florence Isenberg Unrestricted Fund
Theodore Janos Memorial Fund
Jordan Joseph Simcha Fund
Eva Katzman Memorial Fund

Louis and Beatrice Kaye
Unrestricted Fund
Frank Kellert Fund
Dr. Robert Kinstlinger Birthday Fund
Esther G. Koletsky Memorial Fund
Jack Konowitz Memorial Fund
Harry W. and Charlotte Labov Fund
Helaine Lender Milestone Birthday Fund
Arnold and Celia Lerner Fund
Morris Levitin Memorial Fund
Martha Libby Memorial Fund
Ruth and Theodore Lidz Fund
Leo Links Memorial Fund
Reva and Simon Liveten Fund
Janet and Dennis Magid Memorial Fund
for their Parents
J. & R. Malach Holocaust Memorial Fund
Ben and Ruth Marks Fund
Frances R. Merriam Endowment Fund
Sam and Rose Merriam Fund
Ruth Novenstein Memorial Fund
Berta & Lawrence Perkins Endowment Fund
William H. Prusoff Fund
Francis Regelson Memorial Fund
Carol Robbins Milestone Birthday Fund
Dr. Frederick L. Sachs Memorial Fund
Leah Sachs Memorial Fund
Louis Sachs Memorial Fund
Beatrice Sakowitz Fund
Sidney and Betsy Savelle Endowment Fund
Gloria Schaffer Endowment Fund
Scheps Family Simcha Fund
Shirley F. Scholder Endowment Fund
Kurt, Trude and Peter A. Schreiber
Memorial Fund

Barnett & Ida Senderoff Memorial Fund
Mark and Deborah Sessel Young
Leadership Award Fund
The Seton Tzedakah Fund
Leonard Shechtman Memorial Fund established
by his wife, Karen Stelzer Shechtman
Cecile and Richard Sheramy Fund
Susan Fromm Shimelman Fund
Hahn Silberberg Family Fund
Sidney S. and Marion B. Silverberg
Memorial Fund
Lois Roth Smirnoff 80th Birthday Fund
Nathan Sosensky Memorial Fund
Stanger Colodner Family Fund
Louis G. Stein Memorial Fund
Shirley Steinman Memorial Fund
Adolph, Ruth & Elizabeth Stelzer Memorial
Fund, established by their daughter,
Karen Stelzer Shechtman
Daniel I Rose Sinder Unrestricted Fund
Daniel and Rose Smolen Unrestricted Fund
Marion C. Stein Unrestricted Fund
David and Hannah Surasky Fund
The Teplitzky Family Young Leadership Fund
Lilyan and Maurice Ullman Fund
Barry and Hyla Vine Family Endowment Fund
Vlock Family Foundation
Mary Lou and Edward Winnick Endowment Fund
Seymour Yudkin Memorial Fund

/ SAUL BELL LEFT A BEQUEST IN HIS WILL TO ESTABLISH A FUND FOR HIS SYNAGOGUE, CONGREGATION BETH EL-KESER ISRAEL /

“Together with Hope, Saul created a loving home for their children; Michael, Jonathan and David. Saul and Hope worked hard to ensure their children would have good educational opportunities, and indeed ultimately, they were very proud of their boys’ accomplishments and the lives they created.”

— Rabbi Jon-Jay Tilsen,
Congregation Beth El-Keser Israel

Saul Bell was born 101 years ago in Brooklyn, to Paul & Bella Bell, who had emigrated from Russia a decade earlier. Saul grew up with his dear sister Lorraine in an ethnically diverse neighborhood. Saul was a good son who honored his parents. He worked in his father’s drug store, and went on to study and teach chemistry and pharmacy, being the sole graduate of that division’s doctoral program when he stood to receive his degree at Columbia University.

Saul helped develop pesticides for allied troops in the Pacific during World War Two, to protect them from malaria, and after the war had a distinguished career as a pharmaceutical chemist. He developed a wide range of products, from skin care to mosquito repellent.

When the family moved to Connecticut, he accepted a longer commute so his family could live in a developed Jewish community, the Westville neighborhood, where he lived until moving to Maryland to be closer to family a few years ago.

Saul attended elementary school in Brooklyn with a girl named Hope Rosenblatt, destined to be his high school prom date. They were married in 1941, after he received his degree, and lived in a brownstone walkup in Brooklyn, then in New Jersey and ultimately relocating with his company to Connecticut.

Saul and Hope were a self-sufficient couple, which is to say that while they had many good friends, they were happy to be with each other. Their focus was on their work, local institutions such as the Neighborhood Music School and Congregation Beth El-Keser Israel, and most of all their family. They traveled together to Israel, and to Nantucket, but their home, the synagogue, and the concert hall, were always their favored locations.

It was largely due to his personal qualities that Saul was drafted to become BEKI synagogue president in 1995, playing the role of peacemaker, guiding and enabling the congregation to move forward in a collaborative, organized and positive manner. BEKI needed someone to make a decision that everyone would respect, thanks to the intelligence, kindness and integrity of the officer. He was the right person at the right time.

Saul was a good leader and a good follower. He was a terrific volunteer. He built the sukka and helped with brunches. He served as Men’s Club President, and he was on-call for daily services, usually timed to interrupt his dinner, when one more person was needed for the minyan. He was a leader in the BEKI 2000 Planning Process, and a generous contributor to the Annual Campaign and BEKI 2000 project. He paid his dues. Saul did it all.

/ THE EARL AND MURIEL BANQUER ISRAEL ENDOWMENT FUND /



During their lifetimes, Earl and Muriel Banquer established charitable gift annuities with the Jewish Foundation. The annuities provided them with a charitable deduction and annual payments. The Banquers designated that the remainder be used to establish an endowment in their name for charitable programs and organizations in Israel.

"A person's every act begins with a dream and ends with one."

— Theodor Herzl

/ WOMEN OF VISION AND WOMEN OF VISION TOO /

The Women of Vision Society was created in 1996 in order to ensure that a permanent, restricted endowment fund would forever be available to enhance the quality of life for Jewish women and their families in Greater New Haven. One hundred women contributed \$1,000 each to establish the original endowment, from which grants have been made annually since 1998. The Women of Vision Society Too initiative was launched in 2002 to allow additional members of the community the opportunity to help increase the monies available for grants that support scholarships for Jewish women to study in Israel or do graduate work in a Jewish-related subject, speakers for Jewish women's programming, and projects of concern to the Jewish home and family. Since 1998, over \$180,000 in grants has been distributed.

* Designates a woman who has made an additional commitment to the endowment

**CREATE A LEGACY
FOR WHAT IS
IMPORTANT
TO YOU**

Women of Vision

Anonymous
Elaine Ades
Cecle Adler
Caron Alderman
Lucille Alderman
Darcy McGraw Altman
Mira Arbonies
Sara Ann Auerbach
Judith August
Joan Bailey
Debbie Brander Barbieri
Betsy Barnston
Chana Baron
Judith Barr
Jennifer Bayer
Ruthann Beckerman
Abby Bench
Sharon Bender
Barbara Berg
Ina Berson
Civianne Bloch
Sarah Blum
Marjorie Botwinik
Elaine Braffman
Betsy Adler Brauer
Charlotte Brenner*
Phyllis Brodoff
Susan Buxbaum
Laura Campbell
Linda Cedarbaum
Elaine Chapman
Roslyn Chosak
Roxanne Coady
Gloria Cohen
Nancy Cohen
Linda Cohen

Linda Friedman Cole
Emily Resnik-Conn
Harriet Cooper
Joanna Cooper
Esther M. Copelon
Judy Diamondstein
Ann Drobnis
Elizabeth Edelglass
Eileen Eder
Yvette Eder
Jody Ellant
Arlene Elovich
In Honor of my granddaughter,
Danielle Epstein, by Nancy Cohen
Debra Epstein
In Honor of my granddaughter,
Jill Epstein, by Nancy Cohen
Linda Cohen Epstein
Ruth Fagen
Susan Birke-Fiedler
Emily Fine
Marilyn Fishbone
Betsy Gandelman Fiske
Betsy Flaherty
Joanne Foodim
Nancy Frydman
Suzanne Gallant
Lillian Gandelman
Dorothy Giannini-Meyers
Pat Ginsberg
Bess Glazer
Miriam Glenn
Eve Gold
Lindy Gold
Bonnie K. Goldberg
In Honor of my mother,
Bernice Michel Goldberg, by Hyla G. Vine

WOMEN OF VISION SOCIETY 2017 GRANT RECIPIENTS

ISRAEL

Beit Ruth: Integrated Academic and Therapeutic Program in Afula

Beit Ruth's Integrated Academic and Therapeutic Village is a long-term therapeutic residence and school with a mission to ensure that vulnerable and at-risk girls are given the opportunity to thrive emotionally, socially, and academically, thereby breaking the cycle of violence for themselves and future generations.

Women of the Wall: Claiming What's Ours

Women of the Wall's programs are a source of encouragement. Through these programs women are empowered to find fulfillment in their spiritual lives, which has a ripple effect on the individual, the family, and society at large. For 28 years, Women of the Wall has fought resolutely on the frontline battle for gender equality and pluralism at the Kotel, Judaism's holiest site.

GREATER NEW HAVEN

BBYO: You Go Girl! An Entry to Jewish Teen Leadership Program

Girls will take part in four learning seminars featuring guest speakers and activities. A mentor/mentee program will be established pairing 8th and 9th grade girls with 11th and 12th grade girls. This program seeks to enhance the lives of Jewish girls by making the transition to high school smoother. Topics will include, If I am not for myself, who will be? Love your neighbor as yourself, and Tikkun Olam.

Discovery to Cure: Teal Tea Project

Women of Ashkenazi Jewish descent are at a higher risk for carrying the two genes, BRCA 1 and BRCA 2, that mutate, causing an increased risk for breast cancer and women's reproductive cancers. Teal Teas will target Jewish women's organizations to educate them on the increased risk of gynecological cancers and the vital research being done. Discovery to Cure will provide presentations by researchers and survivors, over tea, for members of local Jewish organizations. Participants will learn how they can be proactive about their health care.

Ezra Academy: Jewish Women in History

The Jewish Women's Archive will present two community workshops. The first, for educators and mentors, will focus on the role of women in Jewish History. The Archive will then present a program for students and teachers on how to collect the oral histories of Jewish women in their communities.

JCC of Greater New Haven: Jewish Women's Film Series

This series will feature three films with content specific to women's issues, including breast-feeding, women in entrepreneurship, and the impact of anxiety and depression on women. The JCC will work in partnership with Women's Philanthropy and PJ Library to provide meaningful talk backs, facilitated by experts in locations across the Greater New Haven Catchment.

Jewish Family Service of Greater New Haven: Break the Cycle: Preparing for the Future Expansion

JFS will be expanding its Break the Cycle program not only to reach teenage girls and young adult women, but all women as they navigate through relationship transitions. Women of all ages experiencing any violence in their relationships will be supported. Programs and workshops will provide skills for greater empowerment.

Rabbi Rona Shapiro: Shalom Hartman Rabbinic Leadership Institute

This highly selective program in Jerusalem for rabbinic leaders entails four weeks of study during the summer and one week during the winter. The program includes 16 online webinars during the year. Participation in this program enhances the human capital of our community and increases our community's visibility nationwide.

Tower One/Tower East: Tikkun Olam, Help Save the Environment: Use Plarn!

Plarn recycles plastic shopping bags and transforms them into plastic yarn that one can knit or crochet. This intergenerational project for young girls and senior women will work together knitting and crocheting plarn into sleeping mats for the Women's Homeless Shelters and Women's Warming Centers. At shelters and warming centers there are limited hours of daily operation, and when one leaves, she must take all her belongings with her. Light weight sleeping mats will make a difference.

/ WOMEN OF VISION AND WOMEN OF VISION TOO, CONT. /



Michal Barkal Brody, founder of Alma Pre-Military Academy for Female Leadership, visited from Israel this month to speak about the incredible impact she is having on disadvantaged women in Israel. Through her program, young women are gaining access to leadership skills and tools to help them succeed in the IDF and ultimately attain greater success in life following their IDF service. Alma is a Women of Vision grant recipient.

* Designates a woman who has made an additional commitment to the endowment

**CREATE A LEGACY
FOR WHAT IS
IMPORTANT
TO YOU**

In tribute to the memory of my brother,
Dr. Edward Goodruff Steinlauf,

by Heidi Hurwitz
Carole Greenbaum
Barbara Greenberg

In Honor of Barbara Greenberg,
a real Woman of Vision by
Ruthann Beckerman

Evelyn Greenblatt
Doris Greenberg
Marjorie Greenblatt
Ruth Greenblatt
Linda Greenhouse
Rena Grodd
Velma Grodd
Roberta Grossman

Taube Gurland
Judi Hahn
Lisa Harding
Lauren Hass
Ronda Hendel
Rita Hershenson
Claudia Heyman
Marjorie Hirshfield
Gloria Hoder

Amy Holtz
Betsy Hoos*
Jennifer Rachel Hoos
Michele Faye Hoos
Stephanie Hyla Hoos
Miriam Horowitz
Dale Hurwitz
Teddy Hurwitz
Dorothy Hyatt

Susan E. Jacobson, in loving memory
of my mother, Rebecca Govrin Jacobson
Lisa Kapp
Iny Karp

Barbara Katz
Marni Smith Katz
Carol Kaufman
Susan Kaufman
Rosalyn Kaye
Sandy Kerzner
Danielle Kinstlinger
Elaine Klein
Judy Kleinstein
Caryl Kligfeld

In loving memory of Florence Ratner
Klugman by her daughter,
Marilyn Fishbone
In loving memory of Bertha Konowitz
by her son, Ed Konowitz

Alison Kogan
Nurit Kohl
Jackie Koral
Robin Kramer
Evelyn Krevolin*
Shirley Kroopnick
Elaine Lawson
Cindy Leffell
Helaine Lender
Margaret Lerner
Roslyn Lerner
Ruth Lesser
Diane Levey
Lydia Levine
Betty Levy
Beverly Levy
Perri Levy
Barbara Lichtman
Loretta G. Lipka
Roberta Litvinoff
Jan Magid
Amy Margolis
Bernice Margolis

Joan Glazer Margolis
Marilyn Margolis
Darcy Marks
Mary Mathog
Rebecca Meyer
Roslyn Meyer
Barbara Jean Miller
L. Faith Miller
Harriett Miller
Sandra Milles
Susan Naiman
Ann Nishball
Barbara Green Orell
Ruth Ostfeld
Debra Reiter Panitch
Melissa Perkal
Danya Perry
Sarah Perry
Sydney A. Perry
Madeline Potash
Jo-Ann Price
Rachel Ranis
Hyla Raphael
In loving memory of Yetta Waldman
Ratner by her granddaughter,
Marilyn Fishbone
Marcia Reiter
Lillian Resnik
Carol Robbins
Patricia Rogovin
Lynda Rosenfeld
In loving memory of Marilyn Rosenfield
by her daughter, Andrea and Ed Konowitz
In Honor of my granddaughter,
Samara Rozen, by Nancy Cohen
Stacey Cohen Rozen
Diane Daskel Ruben
Lynn Rudich
Jane Rudner

Ruth Sachs
Gloria Sack
Mary Beth Saltzman
Emily Sandberg
Betsy Savelle
Linda Savitsky
Ellen Scalettar
Lorrie Schaefer
Gloria Schaffer
Enid Scheps*
Shirley Scholder
Lynne Schpero
Cheryl Schwartz
Dana Schwartz
Heni Schwartz
Judith Schwartz
Marlene Schweitzer
Barbara Segaloff
Jodi Seidner
Cis Serling
Deborah Sessel
Holli Shanbrom
Harriet Shapiro
Phyliss Shapiro
Jane Webber Shernow
Pattie Shure
Meryl Silver
Ina Silverman
Carol Sirot
Judy Sklarz
Judy Skolnick*
Susan Skope
Gayle Slossberg
Lois Smirnoff
Lois Spivack
Lisa Stanger*
In tribute to the memory of my brother,
Dr. Edward Goodruff Steinlauf by
Marcie S. Sugarmann

Shirley Stephson
Betsy Stern
In loving memory of Florence Ginzberg Supowitz
by her daughter, Barbara Greenberg
Janice Sussman
Robyn Teplitzky
Doreen Testa
Rebecca Tishkoff
Shirley Trachten
Stacey Trachten
In Honor of my daughter,
Glenna Jillian Vine, by Hyla G. Vine
In Honor of my daughter, Ilana Michel Vine,
by Hyla G. Vine
In loving memory of my mother-in-law,
Lillian E. Vine, by Hyla G. Vine
Hyla G. Vine
Gail Brekke Vlock
Karen Vlock
Laurel Vlock
Sandra Vlock
Helen Vogel
Laury Alderman Walker
Joan Wallack
In Honor of my daughter,
Lisa Fishbone Wallack by Marilyn Fishbone
Barbara Wareck
Lillian Weinberg
Elise Weiner
Martha Sue Weisbart
Marian Wexler
Marcia Witten Ana White
Esther White
Mary Lou Winnick
Marcia Witten
Liz Wolpert
Leslie Zackin
Pearl Zale
Ariel Zohar

/ YOUTH PHILANTHROPY /

The AOK Fund
Jonathan Agin Tzedakah Fund
Matthew Agin Tzedakah Fund
Alejandro Alderman Tzedakah Fund
Nathaniel Carlos Alderman
Tzedakah Fund
Gabrielle Arons Tzedakah Fund
Zachary Arons Tzedakah Fund
Ariel Astrachan Tzedakah Fund
Lital Avni-Singer Tzedakah Fund
Nati Avni-Singer Tzedakah Fund
Ethan Bayer Tzedakah Fund
Karley Madison Bayer Tzedakah Fund*
Samuel Boaz Bayer Tzedakah Fund
Noah Amichai Bayer Tzedakah Fund
Alex Bell Tzedakah Fund
Jonathan Bell Tzedakah Fund
Jessica Sarah Bell Build a
Tzedakah Fund
Heddy Ben-Atar Tzedakah Fund
Daniel Ben-Atar Tzedakah Fund
Amy Elizabeth Bender Tzedakah Fund
Joshua Ethan Benjamin Tzedakah Fund
Ryan Zitser Benjamin Tzedakah Fund
Al Berkowitz and Jack Chasnoff
Tzedakah Fund
Jason Scott Bitterman Tzedakah Fund
Abigail Blas Tzedakah Fund
Daniel Blas Tzedakah Fund
Alexa Paige Buxbaum Tzedakah Fund
Jaden Martin Buxbaum Tzedakah Fund
Zachary Campbell Tzedakah Fund
Children of Temple Beth David
Tzedakah Fund
Samantha Sue Cohen Tzedakah Fund
Matthew Cohen Tzedakah Fund

Stephanie Lynn Cohen Tzedakah Fund in
memory of Jack and Muriel Cohen
Brandon Scott Cohen Tzedakah Fund
in memory of Jack and Muriel Cohen
Liora Cohen-Fraade Tzedakah Fund
Nathaniel N. Cohen-Fraade
Tzedakah Fund
Sophia Colodner Tzedakah Fund
Jeremy S. Conn Tzedakah Fund
Jordan R. Conn Tzedakah Fund
Rebecca Beth Eisenberg
Build a Tzedakah Fund
Samuel Eisenberg Tzedakah Fund
Andrew Felton Charitable
Tzedakah Fund
Lauren Elias Tzedakah Fund
Yaffah Nessyah Ferber Tzedakah Fund
Jacob Daniel Feuerstein Tzedakah Fund
Joshua Thomas Feverstein
Tzedakah Fund
Scott Albert Feinberg Tzedakah Fund
Elizabeth Fiedler Tzedakah Fund
Julie Fleischman
Samantha Fleischman
Rachel Forbes Tzedakah Fund
Amanda Rachel Fox Tzedakah Fund
Marissa L. Friedman Tzedakah Fund
Stacy I. Friedman Tzedakah Fund
Eva and Miriam Gerber Tzedakah Fund
Dana M. Furst Build a Tzedakah Fund
Jenna Goldberg Tzedakah Fund
Sophia Berg Golden Tzedakah Fund
Emma Golub Tzedakah Fund
Rachel H. Green Tzedakah Fund
Alexander William Greenhouse
Tzedakah Fund

Jack Gordon Greenhouse
Tzedakah Fund
Jacob M. Guglin Tzedakah Fund
Rebecca Hendel Build a Tzedakah Fund
Benjamin Hendel Build a Tzedakah Fund
Andrew Heyman Tzedakah Fund
Matthew and Jenny Heyman
Tzedakah Fund
Aaron Hirsch Tzedakah Fund in Honor
of his great-great-aunt, Esther Gilbert
Stephanie Hoos Tzedakah Fund
Daniel Humphrey Tzedakah Fund
Adam Jacoby Tzedakah Fund
Sarah Kahn Tzedakah Fund
Eva Kerman Tzedakah Fund
Nathaniel E. Kerman Fund
Andrew Perry Kingsley Tzedakah Fund
Daniella Perry Kingsley Tzedakah Fund*
Jacob Perry Kingsley Tzedakah Fund
David Alex Kramer Tzedakah Fund
Jessie Lynn Kramer Tzedakah Fund
Jamie Lyn Kramer Build a
Tzedakah Fund
Richard Kramer Tzedakah Fund
Mathew Kramer Tzedakah Fund
Ilana Rachel Levine Tzedakah Fund
Joshua Seth Levine Tzedakah Fund
Sarah Lewis Bat Mitzvah Fund
Lirtzman-Sivkin Tzedakah Fund
Jesse Lirtzman-Sivkin
September 11th Fund
Talya Mandelkern Tzedakah Fund
Micah Margolis Tzedakah Fund
The Mike Fund
Forrest Miller Tzedakah Fund
Matthew Grant Olins Tzedakah Fund

* New Fund 2017

**CREATE A LEGACY
FOR WHAT IS
IMPORTANT
TO YOU**

Josh Orell Tzedakah Fund
Elizabeth Jackson Perkins
Tzedakah Fund
Matthew Perkins Tzedakah Fund
Nicholas Perkins Tzedakah Fund
Jim Perkins Tzedakah Fund
Mark I. Pinkert Tzedakah Fund
Daniel Pinkert Build a Tzedakah Fund
Aaron Plotke Tzedakah Fund
Benjamin Pollak Tzedakah Fund
Rebecca Celia Ravski Tzedakah Fund
Ariel Rock Tzedakah Fund
David and Sonia Rosenholtz
Tzedakah Fund
Corey Rosenholtz Fund
Samuel Rosier Tzedakah Fund
Hannah Shirley Rosner Tzedakah Fund
Daniel Birdwhistell Rothberg
Tzedakah Fund
Jason Birdwhistell Rothberg
Philanthropic Fund
Samyomi Fund
Jonathan Hall Schaefer Tzedakah Fund
Kaitlyn Ashley Schatz Tzedakah Fund*
Caroline Schiff Tzedakah Fund
Elyse Mara Schoenfeld Tzedakah Fund
Allison Schwartz Tzedakah Fund
Corey Schwartz Bar Mitzvah Fund
Jonathan Schwartz Build a
Tzedakah Fund
Devorah Leah Seidel Tzedakah Fund
Elizabeth Skalka Tzedakah Fund
Rachel Skalka Tzedakah Fund
Shai Moshe Sokolow Silverman
Tzedakah Fund
Jeremy Slossberg Tzedakah Fund

Jacob A. Stern Tzedakah Fund
Miriam Stern Tzedakah Fund
Elijah Labowe-Stoll Tzedakah Fund
Katya Labowe-Stoll Tzedakah Fund
Ari Ross Sussman Fund
Eve Lily Sussman Tzedakah Fund
TACT (Teens Acting for Community)
Tzedakah Fund
Raz Tal Tzedakah Fund
Jacob Teplitzky Tzedakah Fund
Marlee Sue Teplitzky Tzedakah Fund
Molly Yael Teplitzky Tzedakah Fund
Taylor Beth Teplitzky Build a
Tzedakah Fund
Max Trachten Build a Tzedakah Fund
Perry Trachten Build a Tzedakah Fund
Samantha Trachten Tzedakah Fund
Kelly Udelsman Tzedakah Fund
Ilana Michel Vine Build a
Tzedakah Fund
Glenna Jillian Vine Build a
Tzedakah Fund
Laura Visochek Tzedakah Fund
Allan Visochek Tzedakah Fund
Steven Wasserman Tzedakah Fund
Ben Watsky Tzedakah Fund
Rebecca E. Watsky Tzedakah Fund
Lauren Wein Tzedakah Fund
Joni Weintraub Tzedakah Fund
Sasha Weitzman Tzedakah Fund
Jason White Tzedakah Fund
Lauren Wiznia Tzedakah Fund
Samuel Louis Yardeni Fund for
Special Needs
Michelle Zackin Build a Tzedakah Fund
Beverly Zlotoff Memorial Tzedakah Fund

2017 Distributions from Build a Tzedakah/Youth Philanthropy Funds went to:

American Friends of Magen David Adom
Anti-Defamation League of Connecticut
Big Brothers Big Sisters of Southwest CT
Birthright Israel
Camp Ramah
Chabad at Yale
Clifford Beers Clinic
Community Soup Kitchen
Congregation Adat Reyim
Congregation B'nai Jacob
Congregation Beth El-Keser Israel
Congregation Or Shalom
Ezra Academy
Foster Dogs
Habonim Dror North America
IRIS
JDRF
Jewish Community Center of GNH
Jewish Family Service
Jewish Family Service - Food 4 Kids
Jewish Federation of GNH -
Teen Education
Jewish Federation of GNH March
of the Living
Jews United for Justice
Mazon
National Outdoor Leadership School
National Ramah Commission
New Israel Fund
Saint Baldricks Foundation
Towers Foundation
Treatment Advocacy Center
Tzedek DC Inc
US Holocaust Memorial Museum

THE JEWISH FOUNDATION'S BUILD A TZEDAKAH FUND PROGRAM

Your Very Own Fund

The Build a Tzedakah program allows young adults to engage in charitable giving by contributing \$600 from their bar or bat mitzvah gifts, with a match of \$400 from a community donor. With this, the young adult now has a \$1,000 named charitable fund at the Jewish Foundation—he or she, or others, can add to the fund at any time and in honor of special occasions—and every December (Hanukkah time), he or she will be given the opportunity to choose to which charity(ies) he or she wants to make a distribution (distributions are based on the Jewish Foundation's spending policy).

Over the past 13 years, Build a Tzedakah funds have distributed over \$65,000 to more than 65 organizations!

/ INVESTMENT AND MANAGEMENT /

For the fiscal year ending December 31, 2017, the Foundation's managed portfolio had a one-year rate of return of 14.8%.

In January of 2017, following an extensive RFP process (Request for Proposal) by the Foundation's Investment Committee, the Foundation's Board of Trustees engaged SCS Financial to serve as the new Investment Advisor for the Jewish Foundation. One of the goals of engaging SCS was to combine both tactical and strategic advising to ensure ongoing, proactive, and timely portfolio strategy implementation within the Investment Policy Statement established by the Investment Committee, accompanied by excellent manager selection, asset allocation strategy, and sophisticated portfolio exposures.

The Foundation's Investment Committee, in consultation with the outside independent investment advisor, established an allocation strategy and long-term outlook for the investment and management of the Foundation's endowment funds that will target a total return (income plus capital change) that will preserve and enhance (in real dollar terms) the principal value of the funds, and provide a dependable source of support for current operations and programs. The Foundation's long-term approach to endowment spending has sought to maintain and grow each endowment fund while providing the beneficiary organization with consistent distributions.

With the goal of enhancing the risk-adjusted returns (i.e. invest for higher potential returns with lower volatility and risk), the Investment Committee and SCS determined and then implemented a few primary strategy shifts to the portfolio allocation in 2017. The primary shifts can be briefly outlined as follows:

- Private Investments: Targeted higher allocations within the private equity sector (venture capital, growth equity, and buyouts) and private credit areas (loans to middle market companies).
- Public Equities: Increased the allocation to low cost passive strategies to diversify exposure internationally, and enhanced active managers across market caps.
- Fixed Income: Reduced global bond exposure and diversified into various segments of the credit landscape (e.g. direct lending, senior loans) which offer higher income and senior or collateralized credits for downside protection
- Overall: Reallocated to more cost effective and preferred management of absolute return strategies, and adjusted exposures with particular sensitivity to current market conditions (e.g. commodity prices, rising interest rates).

Asset Allocation

The Foundation has continued to maintain a moderately conservatively positioned portfolio, which is well-diversified, constantly monitored, and strategically rebalanced. Currently approximately 25% of the portfolio is allocated to diversified fixed income securities, 58% to public equity strategies (US, International, and Emerging Markets), 10% to hedge fund/total return strategies, and 8% to private equity, private real assets, and private credit strategies. The transition to the allocation and strategy that the Investment Committee established in discussions with SCS was mostly completed by the end of 2017. Two remaining stages of the transition are 1) pending redemptions from hedge fund investments that are anticipated through 2018 (this represents less than 3% of the total portfolio), and 2) the ongoing allocation to private investments that customarily takes 5-7 years to ensure the appropriate diversification across macro-economic environments.

The Foundation also holds cash, life insurance, and Israel Bonds.

Spending Policy

Each year, the Board of Trustees of the Jewish Foundation approves a prudent spending policy that is applied to all unrestricted funds as well as Foundation owned restricted funds. The spending policy is developed in consultation with our investment advisor, as well as the Foundation's Finance and Investment committees. In making its decision, the Board follows the Uniform Prudent Management of Institutional Funds Act, and approved a spending policy that takes into account the uses, benefits, purposes, and duration of the endowment. The current spending policy is 4.0% of a fund's average fair market value for the rolling prior 12 quarters.



/ THE ENDOWMENT /

Fund and Financial
Activity for Fiscal Year
Ending December 31,
2017 (Unaudited)*

Assets

Investments at Market Value.....	\$49,907,587.00
Cash and Cash Equivalents.....	\$653,438.00
Israel Bonds.....	\$438,564.00
Insurance Policies at Cash Value	\$167,390.00
Other Assets.....	\$74,492.00
Loan Receivable.....	\$1,311,609.00

Total Assets..... \$52,553,080.00

Liabilities

Accounts Payable and Accrued Liabilities	\$52,699.00
Grants Payable	\$37,991.00
Designated Custodial/Agency Funds	\$11,232,466.00
Liabilities under Split-Interest Agreements	\$748,606.00

Total Liabilities \$12,071,762.00

**Assets Minus
Liabilities..... \$40,481,318.00**

Revenue and Contributions

Contributions	\$2,451,526.00
Investment Return.....	\$7,087,814.00

Total Revenue \$9,529,340.00

Expenses and Charitable Distributions

Charitable Distributions from Funds and Lead Trusts.....	\$2,817,517.00
Dist. To Jewish Federation pay off loan.....	\$3,283,618.00
Final Dist. From Charit. Lead Trust	\$1,084,480.00
Life Income payments from Charitable Remainder Trust and Annuities.....	\$112,056.00
Investment Fees.....	\$214,364.00
Foundation Operating Expenses.....	\$695,792.00

**Total Expenses and Charitable
Distributions \$8,207,832.00**

**Revenue Minus
Expenses \$1,331,508.00**

* The Jewish Foundation of Greater New Haven's audit is conducted by Teplitzky & Co.

/ ASSETS /

THROUGH DECEMBER 31, 2017

PERCENT OF PORTFOLIO

Total Managed Portfolio 100%

CASH & EQUIVALENTS 2%

Barclays Short Treasury (1-3) Month

FIXED INCOME 23%

SCS Multi-Sector Credit Offshore, Ltd, Doubleline Total Return Bond Fund I, Guggenheim Total Return Bond Fund Inst, IShares Core U.S. Aggregate, Brevet Short Duration Fund, Ltd, Metropolitan West Total Return Bond Fund, Guggenheim Limited Duration Bond Fund, Doubleline Low Duration Bond Fund, Guggenheim Opportunistic Income, Ltd, IShares Barclays 20+ Year Treasury Bond

HEDGE FUNDS 8%

SCS Opportunities Fund, Ltd, SCS Special Situations Fund, Ltd, Forester Diversified, Ltd, Archstone Offshore Fund, Ltd

DOMESTIC EQUITY 32%

Vanguard Total Stock Market Index Fund, SCS US Equity Fund, LLC

INTERNATIONAL EQUITY 24%

Vanguard FTSE Developed Markets ETF, SCS International Equity Fund, LLC

EMERGING MARKET EQUITY 3%

Vanguard FTSE Emerging Markets ETF

PRIVATE CREDIT 1%

Golub Capital Partners, Int'l XI, LP

PRIVATE REAL ASSETS 2%

Venture Invst Assoc III LP, Park Street Capital Natural Resources Fund V, LP, Commonfund Natural Resources Partners VIII, LP

PRIVATE EQUITY 2%

SCS Private Equity IV (Cayman), LP, Park Street Capital Private Equity Fund X, LP, Landmark Equity Partners XIV, LP, Landmark Equity Partners XV, LP

Additional Consolidated Portfolio Assets

Non-Pooled Assets (Life insurance, Loan Receivable), Israel Bonds

PERIOD ENDING DECEMBER 31, 2017

Performance Summary

	MTD	QTD	2017	Inception
TOTAL PORTFOLIO	1.11%	3.53%	14.8%	1/1/17
Blended Benchmark	1.21%	3.86%	14.8%	
CASH & EQUIVALENTS	0.11%	0.10%	0.42%	1/1/17
Barclays Short Treasury (1-3) Month	0.10%	0.26%	0.82%	
FIXED INCOME	0.45%	0.56%	4.93%	1/1/17
Fixed Income Blended Benchmark	0.30%	0.29%	3.62%	
HEDGE FUNDS	0.46%	0.92%	6.15%	1/1/17
HFRI Fund of Funds Composite Index	0.90%	2.02%	7.73%	
DOMESTIC EQUITY	0.79%	6.02%	20.70%	1/1/17
Russell 3000 Index	1.00%	6.34%	21.13%	
INTERNATIONAL EQUITY	1.79%	4.33%	28.47%	1/1/17
FTSE Developed All Cap Ex US Index	1.99%	4.91%	26.65%	
EMERGING MARKET EQUITY	3.71%	5.83%	29.85%	1/1/17
FTSE Emerging Market Index	3.81%	6.70%	31.06%	

/ GOVERNANCE /

Executive Committee

Steven Fleischman, *Chair*

Stephen August,
Investment Chair

Barry Fischman,
Treasurer

Betsy Hoos,
LOJE Chair,
Women's Committee Chair

Mark Sklarz,
Appointee

Stephen Saltzman,
Development Chair

David Trachten,
Appointee

Board of Trustees

Dr. Steven Fleischman, *Chair*

Dr. Craig Sklar, *Vice-Chair*

Norman Alderman

Stephen August, *Investment Chair*

Sharon Bender

Harvey Bixon

Ed Cantor

Nancy Cohen

Dr. Barry Feldman

Barry Fischman, *Treasurer*

Ian Freeman

Dr. Suzanne Frisch

Eric Green, Esq.

Ed Konowitz

Cindy Leffell

Jo-Ann Maynard, Esq.

Eric Ravid

Henry Resnikoff

Dr. Alan Reznik

Larry Shanbrom

Jim Vlock

Advisory

Dr. Norman Ravski,
Federation President

Ex-Officio

Dr. Stephanie Wain,
Federation Chair

Rabbi Jon-Jay Tilsen,
Brd of Rabbis Appointee

Ex-Officio/Past Chairs

Betsy Hoos,
LOJE Chair, Women's Committee Chair

Dr. Jeffrey Hoos

Stephen Glick

Dr. John Levy

Mark Sklarz, Esq.

Stephen Saltzman, Esq.,
Development Chair

David Trachten

Investment Committee

Stephen August,
Chair

Betsy Banston

Ed Cantor

Jeffrey Chaffkin

Kevin Fox

Barry Fischman

Steve Fleischman

Jeffrey Hoos

Lynn Landau

Steve Saltzman

Paul Schatz

Nate Silverstein

Craig Sklar

Mark Sklarz

Ken Spitzbard

Jim Vlock

Alan Weiss

Iain York

Finance Committee

Barry Fischman,
Treasurer

Ed Konowitz

Eric Ravid

Professionals

Lisa Stanger, Esq.,
Executive Director

Jennifer Bayer,
Assistant Director of
Development (part-time)

Tiberius Halai,
Grants and Gifts Manager

Beth Kupcho,
Foundation and Scholarship
Manager (part-time)

Stephanie Licsak,
Comptroller

Governance Committee

Betsy Hoos

Jeffrey Hoos

Steven Fleischman

Stephen Saltzman

David Trachten



Jewish Foundation
OF GREATER NEW HAVEN

Jewish Federation of Greater New Haven
360 Amity Road
Woodbridge, CT 06525
www.jewishnewhaven.org

NONPROFIT ORG
U.S. POSTAGE
PAID
PERMIT NO.2134



[/ NEWHAVENJEWISHFOUNDATION.ORG /](http://NEWHAVENJEWISHFOUNDATION.ORG)

[/ JEWISHLEGACYNEWHAVEN.ORG /](http://JEWISHLEGACYNEWHAVEN.ORG)